

A4868

Leader in Biomolecular Solutions for Life Science



MEK1/MEK2 Rabbit mAb

Catalog No.: A4868

Recombinant

23 Publications

Basic Information

Observed MW

44 kDa

Calculated MW

44 kDa

Category

Monoclonal Antibody

Applications

WB,ELISA,Auto WB

Cross-Reactivity

Human,Mouse,Rat

CloneNo number

ARC0292

Background

The protein encoded by this gene is a member of the dual specificity protein kinase family, which acts as a mitogen-activated protein (MAP) kinase kinase. MAP kinases, also known as extracellular signal-regulated kinases (ERKs), act as an integration point for multiple biochemical signals. This protein kinase lies upstream of MAP kinases and stimulates the enzymatic activity of MAP kinases upon wide variety of extra- and intracellular signals. As an essential component of MAP kinase signal transduction pathway, this kinase is involved in many cellular processes such as proliferation, differentiation, transcription regulation and development. [provided by RefSeq, Jul 2008]

Recommended Dilutions

WB 1:5000 - 1:30000

Auto WB 1:100 - 1:500

ELISA Recommended starting concentration is 1 µg/mL. Please optimize the concentration based on your specific assay requirements.

Immunogen Information

Gene ID

5604/5605

Swiss Prot

Q02750/P36507

Immunogen

Recombinant protein (or fragment). This information is considered to be commercially sensitive.

Synonyms

CFC3; MAPKK1; MEK1; MKK1; PRKMK1; MEK1/MEK2

Contact

 www.abclonal.com

Product Information

Source

Rabbit

Isotype

IgG

Purification

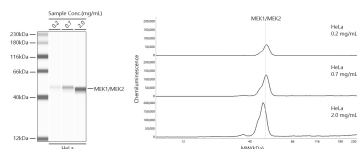
Affinity purification

Storage

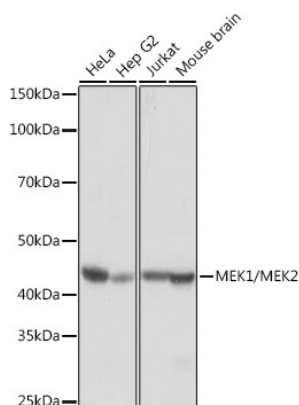
Store at -20°C. Avoid freeze / thaw cycles.

Buffer: PBS containing 50% glycerol and 0.05% BSA, preserved with proclin300 or sodium azide (as specified on the Certificate of Analysis), pH 7.3.

Validation Data



Simple Western™ analysis of lysates from HeLa cells using MEK1/MEK2 Rabbit mAb (A4868) at 1:100 dilution. The virtual lane view (left) shows the target band (as indicated) with samples in concentrations of 0.2 mg/mL, 0.7 mg/mL and 2.0 mg/mL. The corresponding electropherogram view (right) plots chemiluminescence intensity against molecular weight along the capillary for sample concentrations of 0.2 mg/mL, 0.7 mg/mL and 2.0 mg/mL. This experiment was performed under reducing conditions on the Jess™ Simple Western instrument from ProteinSimple, a BioTechne brand, using the 12-230 kDa separation module.



Western blot analysis of various lysates using MEK1/MEK2 Rabbit mAb (A4868) at 1:5000 dilution.

Secondary antibody: HRP-conjugated Goat anti-Rabbit IgG (H+L) (AS014) at 1:10000 dilution.

Lysates/proteins: 25µg per lane.

Blocking buffer: 3% nonfat dry milk in TBST.

Detection: ECL Basic Kit (RM00020).

Exposure time: 1s.