

A4832

Leader in Biomolecular Solutions for Life Science



SIRPG Rabbit pAb

Catalog No.: A4832

Basic Information

Observed MW

45-50kDa

Calculated MW

42kDa

Category

Polyclonal Antibody

Applications

WB, ELISA

Cross-Reactivity

Human, Mouse

Background

The protein encoded by this gene is a member of the signal-regulatory protein (SIRP) family, and also belongs to the immunoglobulin superfamily. SIRP family members are receptor-type transmembrane glycoproteins known to be involved in the negative regulation of receptor tyrosine kinase-coupled signaling processes. Alternatively spliced transcript variants encoding different isoforms have been described.

Recommended Dilutions

WB 1:200 - 1:2000

Immunogen Information

Gene ID

55423

Swiss Prot

Q9P1W8

Immunogen

Recombinant fusion protein containing a sequence corresponding to amino acids 35-140 of human SIRPG (NP_543006.2).

Synonyms

CD172g; SIRPB2; SIRP-B2; bA77C3.1; SIRPgamma; SIRPG

Contact



www.abclonal.com

Product Information

Source

Rabbit

Isotype

IgG

Purification

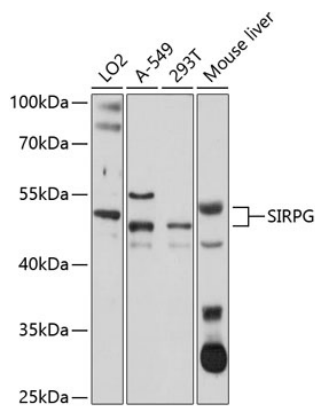
Affinity purification

Storage

Store at -20°C. Avoid freeze / thaw cycles.

Buffer: PBS with 0.02% sodium azide, 50% glycerol, pH7.3.

Validation Data



Western blot analysis of various lysates using SIRPG Rabbit pAb (A4832) at 1:1000 dilution.
Secondary antibody: HRP Goat Anti-Rabbit IgG (H+L) (AS014) at 1:10000 dilution.
Lysates/proteins: 25µg per lane.
Blocking buffer: 3% nonfat dry milk in TBST.
Detection: ECL Basic Kit (RM00020).
Exposure time: 30s.