

A4818

Leader in Biomolecular Solutions for Life Science



MOB1A Rabbit pAb

Catalog No.: A4818

1 Publications

Basic Information

Observed MW

25kDa

Calculated MW

25kDa

Category

Polyclonal Antibody

Applications

WB,FC

Cross-Reactivity

Human

Background

The protein encoded by this gene is a component of the Hippo signaling pathway, which controls organ size and tumor growth by enhancing apoptosis. Loss of the encoded protein results in cell proliferation and cancer formation. The encoded protein is also involved in the control of microtubule stability during cytokinesis. Several transcript variants encoding different isoforms have been found for this gene.

Recommended Dilutions

WB 1:500 - 1:1000

FC 1:20 - 1:50

Immunogen Information

Gene ID

55233

Swiss Prot

Q9H8S9

Immunogen

Synthetic peptide. This information is considered to be commercially sensitive.

Synonyms

MOB1; MATS1; Mob4B; C2orf6; MOBK1B; MABKL1B; MOBKL1B; MOB1A

Contact



www.abclonal.com

Product Information

Source

Rabbit

Isotype

IgG

Purification

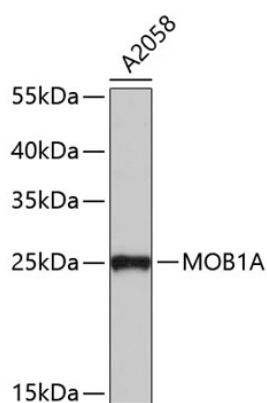
Affinity purification

Storage

Store at 4°C. Avoid freeze / thaw cycles.

Buffer: PBS with 0.02% sodium azide,pH7.3.

Validation Data



Western blot analysis of lysates from A2058 cells, using MOB1A Rabbit pAb (A4818).
Secondary antibody: HRP-conjugated Goat anti-Rabbit IgG (H+L) (AS014) at 1:10000 dilution.

Lysates/proteins: 25µg per lane.

Blocking buffer: 3% nonfat dry milk in TBST.