

A4815

Leader in Biomolecular Solutions for Life Science



HAPLN1 Rabbit mAb

Catalog No.: A4815 **Recombinant**

Basic Information

Observed MW

55kDa

Calculated MW

40kDa

Category

SMab Recombinant Monoclonal
Antibody

Applications

WB,ELISA

Cross-Reactivity

Human,Mouse,Rat

CloneNo number

ARC0234

Background

Predicted to enable hyaluronic acid binding activity. Predicted to be an extracellular matrix structural constituent conferring compression resistance. Predicted to be involved in central nervous system development and skeletal system development. Colocalizes with collagen-containing extracellular matrix.

Recommended Dilutions

WB 1:500 - 1:1000

Immunogen Information

Gene ID

1404

Swiss Prot

P10915

Immunogen

A synthetic peptide corresponding to a sequence within amino acids 250-354 of human HAPLN1 (P10915).

Synonyms

CRT1; CRTL1; HAPLN1

Contact

 www.abclonal.com

Product Information

Source

Rabbit

Isotype

IgG

Purification

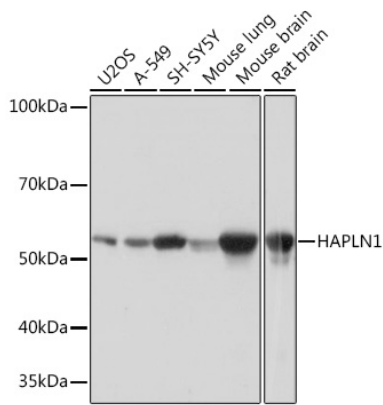
Affinity purification

Storage

Store at -20°C. Avoid freeze / thaw cycles.

Buffer: PBS with 0.02% sodium azide,0.05% BSA,50% glycerol,pH7.3.

Validation Data



Western blot analysis of extracts of various cell lines, using HAPLN1 Rabbit mAb (A4815) at 1:1000 dilution.
Secondary antibody: HRP Goat Anti-Rabbit IgG (H+L) (AS014) at 1:10000 dilution.
Lysates/proteins: 25µg per lane.
Blocking buffer: 3% nonfat dry milk in TBST.
Detection: ECL Basic Kit (RM00020).
Exposure time: 1s.