

A4801

Leader in Biomolecular Solutions for Life Science



PALMD Rabbit pAb

Catalog No.: A4801

Basic Information

Observed MW

63kDa

Calculated MW

63kDa

Category

Polyclonal Antibody

Applications

WB

Cross-Reactivity

Human

Background

Predicted to be involved in regulation of cell shape. Predicted to be located in dendrite.
Predicted to be active in cytoplasm.

Recommended Dilutions

WB 1:500 - 1:2000

Immunogen Information

Gene ID

54873

Swiss Prot

Q9NP74

Immunogen

Synthetic peptide. This information is considered to be commercially sensitive.

Synonyms

PALML; C1orf11; PALMD

Contact



www.abclonal.com

Product Information

Source

Rabbit

Isotype

IgG

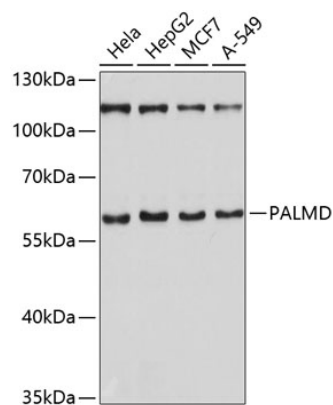
Purification

Affinity purification

Storage

Store at 4°C. Avoid freeze / thaw cycles.
Buffer: PBS with 0.02% sodium azide, pH7.3.

Validation Data



Western blot analysis of various lysates using PALMD Rabbit pAb (A4801) at 1:1000 dilution.
Secondary antibody: HRP-conjugated Goat anti-Rabbit IgG (H+L) (AS014) at 1:10000 dilution.
Lysates/proteins: 25µg per lane.
Blocking buffer: 3% nonfat dry milk in TBST.
Detection: ECL Basic Kit (RM00020).
Exposure time: 10s.