

A4754

Leader in Biomolecular Solutions for Life Science



MRPS23 Rabbit pAb

Catalog No.: A4754

Basic Information

Observed MW

22kDa

Calculated MW

22kDa

Category

Polyclonal Antibody

Applications

WB

Cross-Reactivity

Human

Background

Mammalian mitochondrial ribosomal proteins are encoded by nuclear genes and help in protein synthesis within the mitochondrion. Mitochondrial ribosomes (mitoribosomes) consist of a small 28S subunit and a large 39S subunit. They have an estimated 75% protein to rRNA composition compared to prokaryotic ribosomes, where this ratio is reversed. Another difference between mammalian mitoribosomes and prokaryotic ribosomes is that the latter contain a 5S rRNA. Among different species, the proteins comprising the mitoribosome differ greatly in sequence, and sometimes in biochemical properties, which prevents easy recognition by sequence homology. This gene encodes a 28S subunit protein. A pseudogene corresponding to this gene is found on chromosome 7p.

Recommended Dilutions

WB 1:500 - 1:2000

Immunogen Information

Gene ID

51649

Swiss Prot

Q9Y3D9

Immunogen

Synthetic peptide. This information is considered to be commercially sensitive.

Synonyms

CGI-138; COXPD46; HSPC329; MRP-S23; MRPS23

Contact

 www.abclonal.com

Product Information

Source

Rabbit

Isotype

IgG

Purification

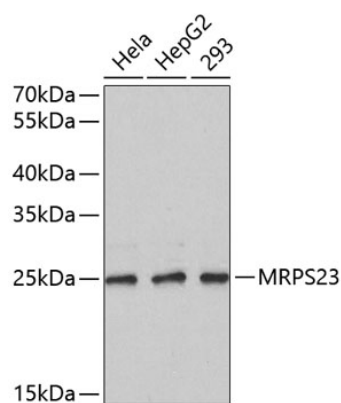
Affinity purification

Storage

Store at 4°C. Avoid freeze / thaw cycles.

Buffer: PBS with 0.02% sodium azide, pH7.3.

Validation Data



Western blot analysis of various lysates using MRPS23 Rabbit pAb (A4754).
Secondary antibody: HRP-conjugated Goat anti-Rabbit IgG (H+L) (AS014) at 1:10000 dilution.
Lysates/proteins: 25µg per lane.
Blocking buffer: 3% nonfat dry milk in TBST.