

A4739

Leader in Biomolecular Solutions for Life Science



RHCG Rabbit pAb

Catalog No.: A4739

Basic Information

Observed MW

57kDa

Calculated MW

53kDa

Category

Polyclonal Antibody

Applications

WB

Cross-Reactivity

Human,Mouse

Background

Enables ammonium transmembrane transporter activity; ankyrin binding activity; and identical protein binding activity. Involved in ammonium transmembrane transport; cellular ion homeostasis; and transepithelial ammonium transport. Located in apical plasma membrane and basolateral plasma membrane. Is integral component of plasma membrane.

Recommended Dilutions

WB 1:200 - 1:2000

Immunogen Information

Gene ID

51458

Swiss Prot

Q9UBD6

Immunogen

A synthetic peptide of human RHCG

Synonyms

RHGK; PDRC2; C15orf6; SLC42A3; RHCG

Contact



www.abclonal.com

Product Information

Source

Rabbit

Isotype

IgG

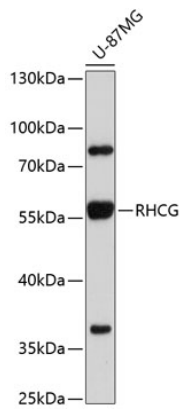
Purification

Affinity purification

Storage

Store at 4°C. Avoid freeze / thaw cycles.
Buffer: PBS with 0.02% sodium azide,pH7.3.

Validation Data



Western blot analysis of extracts of U-87MG cells, using RHCG antibody (A4739) at 1:1000 dilution. Secondary antibody: HRP Goat Anti-Rabbit IgG (H+L) (AS014) at 1:10000 dilution. Lysates/proteins: 25 μ g per lane. Blocking buffer: 3% nonfat dry milk in TBST. Detection: ECL Enhanced Kit (RM00021). Exposure time: 90s.