

A4644

Leader in Biomolecular Solutions for Life Science



AFF4 Rabbit pAb

Catalog No.: A4644 **2 Publications**

Basic Information

Observed MW

150kDa

Calculated MW

127kDa

Category

Polyclonal Antibody

Applications

WB,ELISA

Cross-Reactivity

Human,Mouse

Background

The protein encoded by this gene belongs to the AF4 family of transcription factors involved in leukemia. It is a component of the positive transcription elongation factor b (P-TEFb) complex. A chromosomal translocation involving this gene and MLL gene on chromosome 11 is found in infant acute lymphoblastic leukemia with ins(5;11)(q31;q31q23).

Recommended Dilutions

WB 1:500 - 1:2000

ELISA Recommended starting concentration is 1 µg/mL. Please optimize the concentration based on your specific assay requirements.

Immunogen Information

Gene ID

27125

Swiss Prot

Q9UHB7

Immunogen

Recombinant protein (or fragment). This information is considered to be commercially sensitive.

Synonyms

MCEF; CHOPS; AF5Q31; AFF4

Contact

 www.abclonal.com

Product Information

Source

Rabbit

Isotype

IgG

Purification

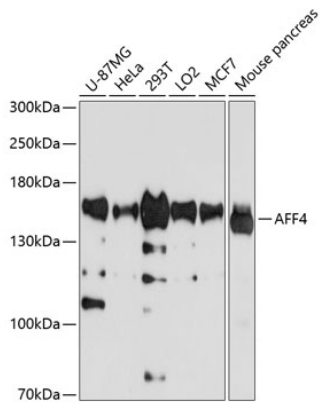
Affinity purification

Storage

Store at -20°C. Avoid freeze / thaw cycles.

Buffer: PBS containing 50% glycerol, preserved with proclin300 or sodium azide (as specified on the Certificate of Analysis), pH 7.3.

Validation Data



Western blot analysis of various lysates using AFF4 Rabbit pAb (A4644) at 1:1000 dilution. Secondary antibody: HRP-conjugated Goat anti-Rabbit IgG (H+L) (AS014) at 1:10000 dilution. Lysates/proteins: 25µg per lane. Blocking buffer: 3% nonfat dry milk in TBST. Detection: ECL Basic Kit (RM00020). Exposure time: 30s.