

A4623

Leader in Biomolecular Solutions for Life Science



# MYCBP Rabbit pAb

Catalog No.: A4623

## Basic Information

### Observed MW

12kDa

### Calculated MW

12kDa

### Category

Polyclonal Antibody

### Applications

WB,IHC-P,ELISA

### Cross-Reactivity

Human

## Background

The protein encoded by this gene binds to the N-terminus of the oncogenic protein C-MYC, enhancing the ability of C-MYC to activate E box-dependent transcription. The encoded protein is normally found in the cytoplasm, but it translocates to the nucleus during S phase of the cell cycle and associates with C-MYC. This protein may be involved in spermatogenesis. This gene can be silenced by microRNA-22. Two transcript variants, one protein-coding and the other probably not protein-coding, have been found for this gene.

## Recommended Dilutions

WB 1:500 - 1:2000

IHC-P 1:100 - 1:200

## Immunogen Information

### Gene ID

26292

### Swiss Prot

Q99417

### Immunogen

Recombinant fusion protein containing a sequence corresponding to amino acids 1-103 of human MYCBP (NP\_036465.2).

### Synonyms

AMY-1; MYCBP

## Contact



[www.abclonal.com](http://www.abclonal.com)

## Product Information

### Source

Rabbit

### Isotype

IgG

### Purification

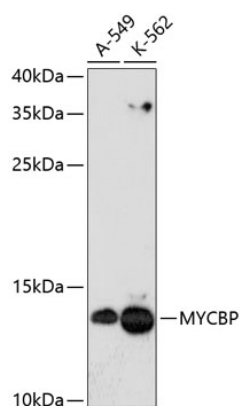
Affinity purification

### Storage

Store at -20°C. Avoid freeze / thaw cycles.

Buffer: PBS with 0.01% thimerosal, 50% glycerol, pH7.3.

## Validation Data



Western blot analysis of various lysates using MYCBP Rabbit pAb (A4623) at 1:3000 dilution.

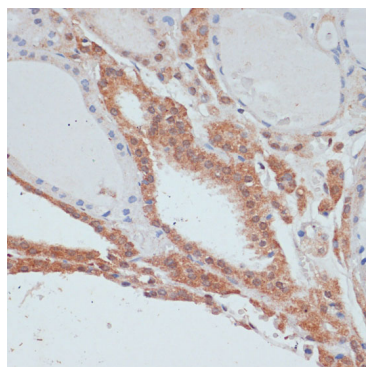
Secondary antibody: HRP Goat Anti-Rabbit IgG (H+L) (AS014) at 1:10000 dilution.

Lysates/proteins: 25µg per lane.

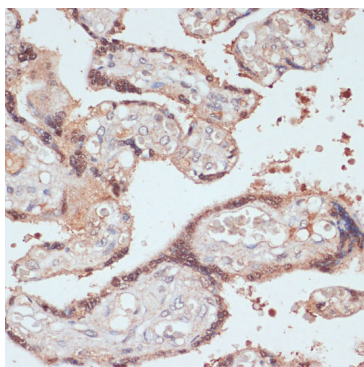
Blocking buffer: 3% nonfat dry milk in TBST.

Detection: ECL Enhanced Kit (RM00021).

Exposure time: 90s.



Immunohistochemistry analysis of paraffin-embedded Human thyroid cancer using MYCBP Rabbit pAb (A4623) at dilution of 1:100 (40x lens). Perform microwave antigen retrieval with 10 mM PBS buffer pH 7.2 before commencing with IHC staining protocol.



Immunohistochemistry analysis of paraffin-embedded Human placenta using MYCBP Rabbit pAb (A4623) at dilution of 1:100 (40x lens). Perform microwave antigen retrieval with 10 mM PBS buffer pH 7.2 before commencing with IHC staining protocol.