

A4618

Leader in Biomolecular Solutions for Life Science



## KLHL3 Rabbit pAb

Catalog No.: A4618

### Basic Information

**Observed MW**

65kDa

**Calculated MW**

65kDa

**Category**

Polyclonal Antibody

**Applications**

WB

**Cross-Reactivity**

Human

### Background

This gene is ubiquitously expressed and encodes a full-length protein which has an N-terminal BTB domain followed by a BACK domain and six kelch-like repeats in the C-terminus. These kelch-like repeats promote substrate ubiquitination of bound proteins via interaction of the BTB domain with the CUL3 (cullin 3) component of a cullin-RING E3 ubiquitin ligase (CRL) complex. Mutations in this gene cause pseudohypoadosteronism type IID (PHA2D); a rare Mendelian syndrome featuring hypertension, hyperkalaemia and metabolic acidosis. Alternative splicing results in multiple transcript variants encoding distinct isoforms.

### Recommended Dilutions

WB 1:500 - 1:1000

### Immunogen Information

**Gene ID**

26249

**Swiss Prot**

Q9UH77

**Immunogen**

Synthetic peptide. This information is considered to be commercially sensitive.

**Synonyms**

PHA2D; KLHL3

### Contact



[www.abclonal.com](http://www.abclonal.com)

### Product Information

**Source**

Rabbit

**Isotype**

IgG

**Purification**

Affinity purification

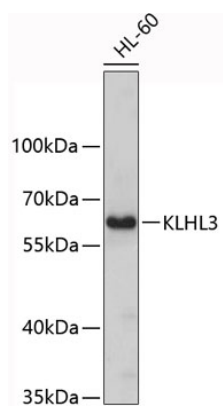
**Storage**

Store at 4°C. Avoid freeze / thaw cycles.

Buffer: PBS with 0.02% sodium azide, pH7.3.

## Validation Data

---



Western blot analysis of lysates from HL-60 cells, using KLHL3 Rabbit pAb (A4618).  
Secondary antibody: HRP-conjugated Goat anti-Rabbit IgG (H+L) (AS014) at 1:10000 dilution.

Lysates/proteins: 25µg per lane.

Blocking buffer: 3% nonfat dry milk in TBST.