

A4610

Leader in Biomolecular Solutions for Life Science



WIPI2 Rabbit pAb

Catalog No.: A4610

Basic Information

Observed MW

50kDa

Calculated MW

49kDa

Category

Polyclonal Antibody

Applications

WB

Cross-Reactivity

Human,Mouse

Background

WD40 repeat proteins are key components of many essential biologic functions. They regulate the assembly of multiprotein complexes by presenting a beta-propeller platform for simultaneous and reversible protein-protein interactions. Members of the WIPI subfamily of WD40 repeat proteins, such as WIPI2, have a 7-bladed propeller structure and contain a conserved motif for interaction with phospholipids (Proikas-Cezanne et al., 2004 [PubMed 15602573]).

Recommended Dilutions

WB 1:200 - 1:2000

Immunogen Information

Gene ID

26100

Swiss Prot

Q9Y4P8

Immunogen

A synthetic peptide of human WIPI2

Synonyms

Atg21; ATG18B; CGI-50; IDDSSA; WIPI-2; WIPI2

Contact



www.abclonal.com

Product Information

Source

Rabbit

Isotype

IgG

Purification

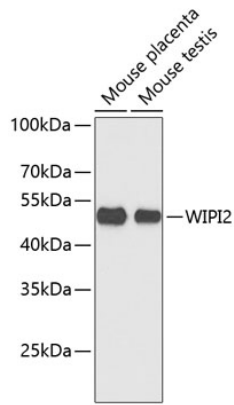
Affinity purification

Storage

Store at 4°C. Avoid freeze / thaw cycles.

Buffer: PBS with 0.02% sodium azide,pH7.3.

Validation Data



Western blot analysis of extracts of various cell lines, using WIPI2 antibody (A4610).
Secondary antibody: HRP Goat Anti-Rabbit IgG (H+L) (AS014) at 1:10000 dilution.
Lysates/proteins: 25 μ g per lane.
Blocking buffer: 3% nonfat dry milk in TBST.