

A4588

Leader in Biomolecular Solutions for Life Science



# BACE2 Rabbit pAb

Catalog No.: A4588

## Basic Information

### Observed MW

56kDa

### Calculated MW

56kDa

### Category

Polyclonal Antibody

### Applications

WB

### Cross-Reactivity

Human

## Background

This gene encodes an integral membrane glycoprotein that functions as an aspartic protease. The encoded protein cleaves amyloid precursor protein into amyloid beta peptide, which is a critical step in the etiology of Alzheimer's disease and Down syndrome. The protein precursor is further processed into an active mature peptide. Alternative splicing results in multiple transcript variants.

## Recommended Dilutions

WB 1:500 - 1:1000

## Immunogen Information

### Gene ID

25825

### Swiss Prot

Q9Y5Z0

### Immunogen

Synthetic peptide. This information is considered to be commercially sensitive.

### Synonyms

ASP1; BAE2; DRAP; AEPLC; ALP56; ASP21; CDA13; CEAP1; BACE2

## Contact



[www.abclonal.com](http://www.abclonal.com)

## Product Information

### Source

Rabbit

### Isotype

IgG

### Purification

Affinity purification

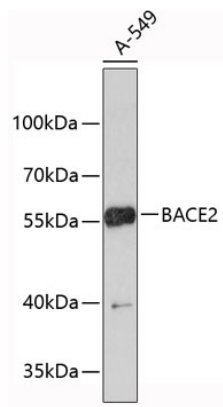
### Storage

Store at 4°C. Avoid freeze / thaw cycles.

Buffer: PBS with 0.02% sodium azide, pH7.3.

## Validation Data

---



Western blot analysis of lysates from A-549 cells, using BACE2 Rabbit pAb (A4588).  
Secondary antibody: HRP-conjugated Goat anti-Rabbit IgG (H+L) (AS014) at 1:10000 dilution.

Lysates/proteins: 25µg per lane.

Blocking buffer: 3% nonfat dry milk in TBST.