

A4560

Leader in Biomolecular Solutions for Life Science



SKIV2L2 Rabbit pAb

Catalog No.: A4560

Basic Information

Observed MW

120kDa

Calculated MW

118kDa

Category

Polyclonal Antibody

Applications

WB,FC

Cross-Reactivity

Human,Mouse

Background

Enables ATP binding activity and RNA helicase activity. Involved in RNA catabolic process; cellular response to DNA damage stimulus; and maturation of 5.8S rRNA. Located in nucleoplasm. Part of TRAMP complex and catalytic step 2 spliceosome. Colocalizes with nuclear exosome (RNase complex). Biomarker of amyotrophic lateral sclerosis.

Recommended Dilutions

WB 1:500 - 1:1000

FC 1:20 - 1:50

Immunogen Information

Gene ID

23517

Swiss Prot

P42285

Immunogen

A synthetic peptide of human SKIV2L2

Synonyms

Dob1; Mtr4; SKIV2L2; fSAP118; KIAA0052

Contact



www.abclonal.com

Product Information

Source

Rabbit

Isotype

IgG

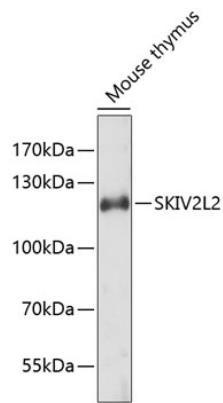
Purification

Affinity purification

Storage

Store at 4°C. Avoid freeze / thaw cycles.
Buffer: PBS with 0.02% sodium azide,pH7.3.

Validation Data



Western blot analysis of lysates from mouse thymus, using SKIV2L2 Rabbit pAb (A4560).
Secondary antibody: HRP-conjugated Goat anti-Rabbit IgG (H+L) (AS014) at 1:10000 dilution.

Lysates/proteins: 25µg per lane.

Blocking buffer: 3% nonfat dry milk in TBST.