

A4499

Leader in Biomolecular Solutions for Life Science



# GCLC Rabbit mAb

Catalog No.: A4499

Recombinant

2 Publications

## Basic Information

### Observed MW

73kDa

### Calculated MW

73kDa

### Category

SMab Recombinant Monoclonal Antibody

### Applications

WB,IHC-P,ELISA

### Cross-Reactivity

Human,Rat

### CloneNo number

ARC1065

## Recommended Dilutions

**WB** 1:500 - 1:1000

**IHC-P** 1:200 - 1:800

**ELISA** Recommended starting concentration is 1 µg/mL. Please optimize the concentration based on your specific assay requirements.

## Contact

 [www.abclonal.com](http://www.abclonal.com)

## Background

Glutamate-cysteine ligase, also known as gamma-glutamylcysteine synthetase is the first rate-limiting enzyme of glutathione synthesis. The enzyme consists of two subunits, a heavy catalytic subunit and a light regulatory subunit. This locus encodes the catalytic subunit, while the regulatory subunit is derived from a different gene located on chromosome 1p22-p21. Mutations at this locus have been associated with hemolytic anemia due to deficiency of gamma-glutamylcysteine synthetase and susceptibility to myocardial infarction.

## Immunogen Information

### Gene ID

2729

### Swiss Prot

P48506

### Immunogen

A synthetic peptide corresponding to a sequence within amino acids 538-637 of human GCLC (P48506).

### Synonyms

GCL; GCS; GLCL; GLCLC; GCLC

## Product Information

### Source

Rabbit

### Isotype

IgG

### Purification

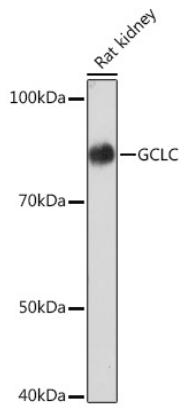
Affinity purification

### Storage

Store at -20°C. Avoid freeze / thaw cycles.

Buffer: PBS with 0.02% sodium azide,0.05% BSA,50% glycerol,pH7.3.

## Validation Data



Western blot analysis of lysates from Rat kidney, using GCLC Rabbit mAb (A4499) at 1:1000 dilution.

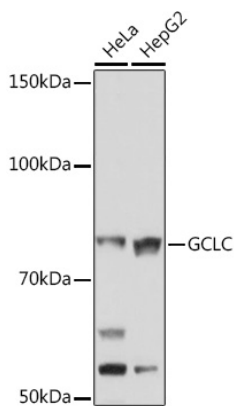
Secondary antibody: HRP-conjugated Goat anti-Rabbit IgG (H+L) (AS014) at 1:10000 dilution.

Lysates/proteins: 25µg per lane.

Blocking buffer: 3% nonfat dry milk in TBST.

Detection: ECL Basic Kit (RM00020).

Exposure time: 3min.



Western blot analysis of various lysates using GCLC Rabbit mAb (A4499) at 1:1000 dilution.

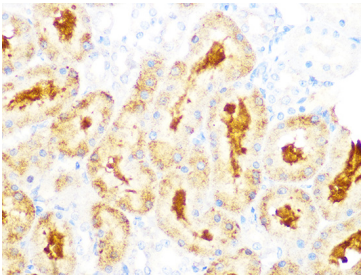
Secondary antibody: HRP-conjugated Goat anti-Rabbit IgG (H+L) (AS014) at 1:10000 dilution.

Lysates/proteins: 25µg per lane.

Blocking buffer: 3% nonfat dry milk in TBST.

Detection: ECL Enhanced Kit (RM00021).

Exposure time: 3min.



Immunohistochemistry analysis of paraffin-embedded Rat kidney using GCLC Rabbit mAb (A4499) at dilution of 1:100 (40x lens). Microwave antigen retrieval performed with 0.01M PBS Buffer (pH 7.2) prior to IHC staining.