

A4484

Leader in Biomolecular Solutions for Life Science



RAPGEF4 Rabbit pAb

Catalog No.: A4484 **1 Publications**

Basic Information

Observed MW

115kDa

Calculated MW

116kDa

Category

Polyclonal Antibody

Applications

WB,ELISA

Cross-Reactivity

Human,Mouse,Rat

Background

Enables guanyl-nucleotide exchange factor activity. Predicted to be involved in regulation of neurotransmitter receptor localization to postsynaptic specialization membrane and regulation of postsynapse organization. Predicted to act upstream of or within adenylate cyclase-activating G protein-coupled receptor signaling pathway; regulation of exocytosis; and secretion by cell. Predicted to be located in plasma membrane. Predicted to be active in glutamatergic synapse; hippocampal mossy fiber to CA3 synapse; and postsynaptic density. Implicated in autistic disorder.

Recommended Dilutions

WB 1:500 - 1:2000

ELISA Recommended starting concentration is 1 µg/mL. Please optimize the concentration based on your specific assay requirements.

Immunogen Information

Gene ID

11069

Swiss Prot

Q8WZA2

Immunogen

Recombinant protein (or fragment). This information is considered to be commercially sensitive.

Synonyms

EPAC; CGEF2; EPAC2; EPAC 2; Nbla00496; CAMP-GEFII; RAPGEF4

Contact

 www.abclonal.com

Product Information

Source

Rabbit

Isotype

IgG

Purification

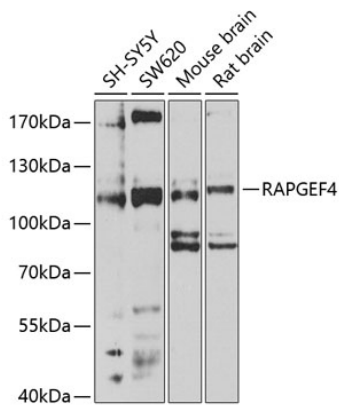
Affinity purification

Storage

Store at -20°C. Avoid freeze / thaw cycles.

Buffer: PBS with 0.02% sodium azide, 50% glycerol, pH7.3.

Validation Data



Western blot analysis of various lysates using RAPGEF4 Rabbit pAb (A4484) at 1:1000 dilution.

Secondary antibody: HRP-conjugated Goat anti-Rabbit IgG (H+L) (AS014) at 1:10000 dilution.

Lysates/proteins: 25µg per lane.

Blocking buffer: 3% nonfat dry milk in TBST.

Detection: ECL Enhanced Kit (RM00021).

Exposure time: 30s.