

A4470

Leader in Biomolecular Solutions for Life Science



RAB32 Rabbit pAb

Catalog No.: A4470

Basic Information

Observed MW

24kDa

Calculated MW

25kDa

Category

Polyclonal Antibody

Applications

WB

Cross-Reactivity

Human

Background

The protein encoded by this gene anchors the type II regulatory subunit of protein kinase A to the mitochondrion and aids in mitochondrial fission. The encoded protein also appears to be involved in autophagy and melanosome secretion. Variations in this gene may be linked to leprosy.

Recommended Dilutions

WB 1:500 - 1:1000

Immunogen Information

Gene ID

10981

Swiss Prot

Q13637

Immunogen

A synthetic Peptide of human RAB32

Synonyms

RAB32

Contact



www.abclonal.com

Product Information

Source

Rabbit

Isotype

IgG

Purification

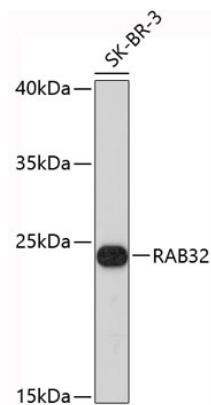
Affinity purification

Storage

Store at 4°C. Avoid freeze / thaw cycles.

Buffer: PBS with 0.02% sodium azide, pH7.3.

Validation Data



Western blot analysis of extracts of SK-BR-3 cells, using RAB32 antibody (A4470).
Secondary antibody: HRP Goat Anti-Rabbit IgG (H+L) (AS014) at 1:10000 dilution.
Lysates/proteins: 25µg per lane.
Blocking buffer: 3% nonfat dry milk in TBST.