

A4432

Leader in Biomolecular Solutions for Life Science



## ANP32B Rabbit pAb

Catalog No.: A4432

### Basic Information

**Observed MW**

24kDa

**Calculated MW**

29kDa

**Category**

Polyclonal Antibody

**Applications**

WB

**Cross-Reactivity**

Human

### Background

Enables RNA polymerase binding activity and histone binding activity. Involved in several processes, including activation of cysteine-type endopeptidase activity involved in apoptotic process; nucleosome assembly; and positive regulation of protein export from nucleus. Located in cytoplasm and nucleoplasm. Colocalizes with nucleolus.

### Recommended Dilutions

WB 1:500 - 1:1000

### Immunogen Information

**Gene ID**

10541

**Swiss Prot**

Q92688

**Immunogen**

A synthetic Peptide of human ANP32B

**Synonyms**

APRIL; SSP29; PHAPI2; ANP32B

### Contact



[www.abclonal.com](http://www.abclonal.com)

### Product Information

**Source**

Rabbit

**Isotype**

IgG

**Purification**

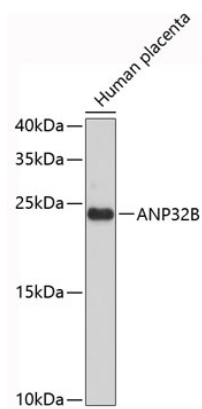
Affinity purification

**Storage**

Store at 4°C. Avoid freeze / thaw cycles.  
Buffer: PBS with 0.02% sodium azide, pH7.3.

## Validation Data

---



Western blot analysis of extracts of human placenta, using ANP32B antibody (A4432).  
Secondary antibody: HRP Goat Anti-Rabbit IgG (H+L) (AS014) at 1:10000 dilution.  
Lysates/proteins: 25µg per lane.  
Blocking buffer: 3% nonfat dry milk in TBST.