

A4398

Leader in Biomolecular Solutions for Life Science



# BCAS2 Rabbit pAb

Catalog No.: A4398

1 Publications

## Basic Information

### Observed MW

25kDa

### Calculated MW

26kDa

### Category

Polyclonal Antibody

### Applications

WB,IHC-P,IF/ICC,ELISA

### Cross-Reactivity

Human,Mouse,Rat

## Background

Involved in mRNA splicing, via spliceosome. Located in centrosome and nuclear speck. Part of U2-type catalytic step 2 spliceosome. Colocalizes with DNA replication factor A complex. Implicated in breast cancer.

## Recommended Dilutions

<b>WB</b>	1:500 - 1:2000
<b>IHC-P</b>	1:50 - 1:200
<b>IF/ICC</b>	1:50 - 1:200
<b>ELISA</b>	Recommended starting concentration is 1 µg/mL. Please optimize the concentration based on your specific assay requirements.

## Contact



[www.abclonal.com](http://www.abclonal.com)

## Immunogen Information

### Gene ID

10286

### Swiss Prot

O75934

### Immunogen

Recombinant protein (or fragment). This information is considered to be commercially sensitive.

### Synonyms

DAM1; SPF27; Snt309; BCAS2

## Product Information

### Source

Rabbit

### Isotype

IgG

### Purification

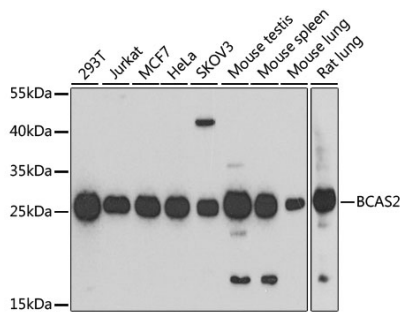
Affinity purification

### Storage

Store at -20°C. Avoid freeze / thaw cycles.

Buffer: PBS containing 50% glycerol, preserved with proclin300 or sodium azide (as specified on the Certificate of Analysis), pH 7.3.

## Validation Data



Western blot analysis of various lysates using BCAS2 Rabbit pAb (A4398) at 1:1000 dilution.

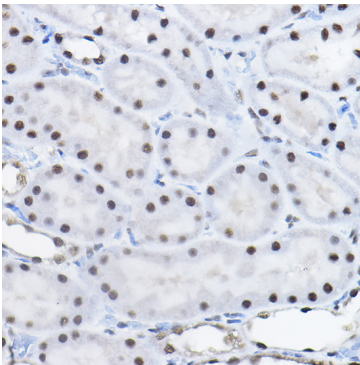
Secondary antibody: HRP-conjugated Goat anti-Rabbit IgG (H+L) (AS014) at 1:10000 dilution.

Lysates/proteins: 25µg per lane.

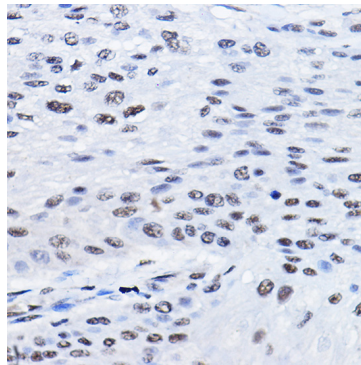
Blocking buffer: 3% nonfat dry milk in TBST.

Detection: ECL Basic Kit (RM00020).

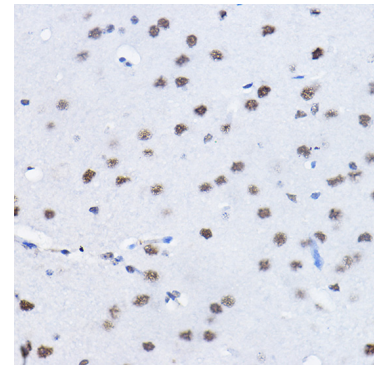
Exposure time: 90s.



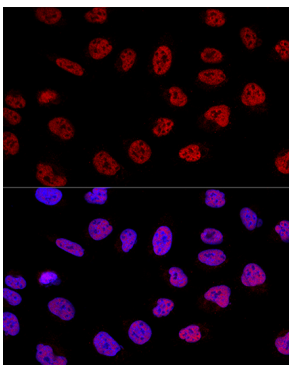
Immunohistochemistry analysis of paraffin-embedded Rat kidney using BCAS2 Rabbit pAb (A4398) at dilution of 1:100 (40x lens). High pressure antigen retrieval performed with 0.01M Citrate buffer (pH 6.0) prior to IHC staining.



Immunohistochemistry analysis of paraffin-embedded Human esophageal cancer using BCAS2 Rabbit pAb (A4398) at dilution of 1:100 (40x lens). High pressure antigen retrieval performed with 0.01M Citrate buffer (pH 6.0) prior to IHC staining.



Immunohistochemistry analysis of paraffin-embedded Mouse brain using BCAS2 Rabbit pAb (A4398) at dilution of 1:100 (40x lens). High pressure antigen retrieval performed with 0.01M Citrate buffer (pH 6.0) prior to IHC staining.



Confocal immunofluorescence analysis of U2OS cells using BCAS2 Rabbit pAb (A4398) at dilution of 1:100. Blue: DAPI for nuclear staining.