

A4391

Leader in Biomolecular Solutions for Life Science



RAB9P40 Rabbit pAb

Catalog No.: A4391

Basic Information

Observed MW

45kDa

Calculated MW

41kDa

Category

Polyclonal Antibody

Applications

WB,ELISA

Cross-Reactivity

Human

Background

Predicted to be involved in receptor-mediated endocytosis and vesicle docking involved in exocytosis. Predicted to be located in cytoplasmic vesicle; cytosol; and trans-Golgi network membrane.

Recommended Dilutions

WB 1:500 - 1:2000

ELISA Recommended starting concentration is 1 µg/mL. Please optimize the concentration based on your specific assay requirements.

Immunogen Information

Gene ID
10244

Swiss Prot
Q7Z6M1

Immunogen

Recombinant protein (or fragment). This information is considered to be commercially sensitive.

Synonyms

p40; RAB9P40; bA65N13.1

Contact



www.abclonal.com

Product Information

Source
Rabbit

Isotype
IgG

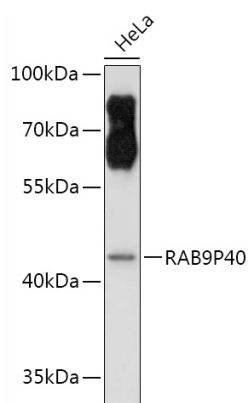
Purification
Affinity purification

Storage

Store at -20°C. Avoid freeze / thaw cycles.

Buffer: PBS with 0.01% thimerosal, 50% glycerol, pH7.3.

Validation Data



Western blot analysis of lysates from HeLa cells, using RAB9P40 Rabbit pAb (A4391) at 1:3000 dilution.

Secondary antibody: HRP-conjugated Goat anti-Rabbit IgG (H+L) (AS014) at 1:10000 dilution.

Lysates/proteins: 25µg per lane.

Blocking buffer: 3% nonfat dry milk in TBST.

Detection: ECL Basic Kit (RM00020).

Exposure time: 90s.