

A4376

Leader in Biomolecular Solutions for Life Science



ERp57 Rabbit mAb

Catalog No.: A4376

Recombinant

Basic Information

Observed MW

57kDa

Calculated MW

54kDa

Category

SMab Recombinant Monoclonal
Antibody

Applications

WB,IHC-P,ELISA

Cross-Reactivity

Human

CloneNo number

ARC0987

Background

This gene encodes a protein of the endoplasmic reticulum that interacts with lectin chaperones calreticulin and calnexin to modulate folding of newly synthesized glycoproteins. The protein was once thought to be a phospholipase; however, it has been demonstrated that the protein actually has protein disulfide isomerase activity. It is thought that complexes of lectins and this protein mediate protein folding by promoting formation of disulfide bonds in their glycoprotein substrates. This protein also functions as a molecular chaperone that prevents the formation of protein aggregates.

Recommended Dilutions

WB 1:500 - 1:1000

IHC-P 1:50 - 1:200

Immunogen Information

Gene ID

2923

Swiss Prot

P30101

Immunogen

A synthetic peptide corresponding to a sequence within amino acids 100-200 of human ERp57 (P30101).

Synonyms

P58; ER60; ERp57; ERp60; ERp61; GRP57; GRP58; PI-PLC; HsT17083; HEL-S-269; HEL-S-93n

Contact



www.abclonal.com

Product Information

Source

Rabbit

Isotype

IgG

Purification

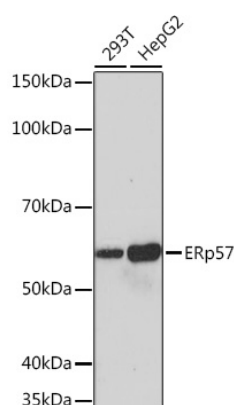
Affinity purification

Storage

Store at -20°C. Avoid freeze / thaw cycles.

Buffer: PBS with 0.02% sodium azide, 0.05% BSA, 50% glycerol, pH7.3.

Validation Data



Western blot analysis of various lysates using ERp57 Rabbit mAb (A4376) at 1:1000 dilution.

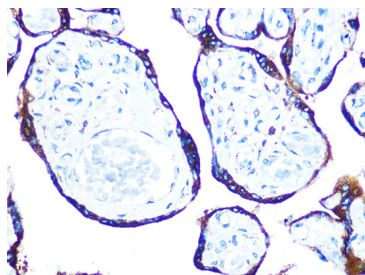
Secondary antibody: HRP Goat Anti-Rabbit IgG (H+L) (AS014) at 1:10000 dilution.

Lysates/proteins: 25µg per lane.

Blocking buffer: 3% nonfat dry milk in TBST.

Detection: ECL Basic Kit (RM00020).

Exposure time: 10s.



Immunohistochemistry analysis of paraffin-embedded human placenta using ERp57 Rabbit mAb (A4376) at dilution of 1:100 (40x lens). Perform microwave antigen retrieval with 10 mM PBS buffer pH 7.2 before commencing with IHC staining protocol.