

A4368

Leader in Biomolecular Solutions for Life Science



USH1C Rabbit pAb

Catalog No.: A4368

Basic Information

Observed MW

73kDa

Calculated MW

45kDa/58kDa/60kDa/62kDa/101kDa

Category

Polyclonal Antibody

Applications

WB, ELISA

Cross-Reactivity

Human, Mouse, Rat

Background

Predicted to enable actin filament binding activity. Acts upstream of or within neuron development; startle response; and synapse organization. Predicted to be part of stereocilia ankle link complex. Predicted to be active in several cellular components, including cilium; photoreceptor inner segment; and stereocilium tip. Is expressed in brain; hair cell; pleuroperitoneal region; sensory system; and trunk musculature. Used to study Usher syndrome. Human ortholog(s) of this gene implicated in Usher syndrome; Usher syndrome type 1; Usher syndrome type 1C; and autosomal recessive nonsyndromic deafness 18A. Orthologous to human USH1C (USH1 protein network component harmonin).

Recommended Dilutions

WB 1:200 - 1:2000

Immunogen Information

Gene ID

564412

Swiss Prot

Immunogen

Recombinant fusion protein containing a sequence corresponding to amino acids 1-100 of zebrafish USH1C (NP_001035018.1).

Synonyms

zgc:136806; USH1C

Contact



www.abclonal.com

Product Information

Source

Rabbit

Isotype

IgG

Purification

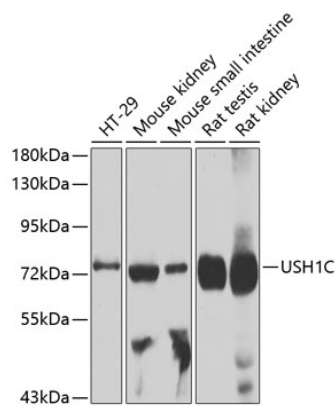
Affinity purification

Storage

Store at -20°C. Avoid freeze / thaw cycles.

Buffer: PBS with 0.02% sodium azide, 50% glycerol, pH7.3.

Validation Data



Western blot analysis of extracts of various cell lines, using USH1C antibody (A4368) at 1:1000 dilution.
Secondary antibody: HRP Goat Anti-Rabbit IgG (H+L) (A5014) at 1:10000 dilution.
Lysates/proteins: 25µg per lane.
Blocking buffer: 3% nonfat dry milk in TBST.
Detection: ECL Basic Kit (RM00020).
Exposure time: 90s.