

A4358

Leader in Biomolecular Solutions for Life Science



# GNPDA1 Mouse mAb

Catalog No.: A4358

## Basic Information

### Observed MW

31kDa

### Calculated MW

33kDa

### Category

Monoclonal Antibody

### Applications

WB,ELISA

### Cross-Reactivity

Mouse

## Background

Glucosamine-6-phosphate deaminase (EC 3.5.99.6) is an allosteric enzyme that catalyzes the reversible conversion of D-glucosamine-6-phosphate into D-fructose-6-phosphate and ammonium (Arreola et al., 2003 [PubMed 12965206]).

## Recommended Dilutions

**WB** 1:500 - 1:1000

**ELISA** Recommended starting concentration is 1 µg/mL. Please optimize the concentration based on your specific assay requirements.

## Immunogen Information

**Gene ID**  
10007

**Swiss Prot**  
P46926

### Immunogen

Synthetic peptide. This information is considered to be commercially sensitive.

### Synonyms

GPI; HLN; GNP1; GNPI; GNPDA; GNPDA1

## Contact

 [www.abclonal.com](http://www.abclonal.com)

## Product Information

**Source**  
Mouse

**Isotype**  
IgG

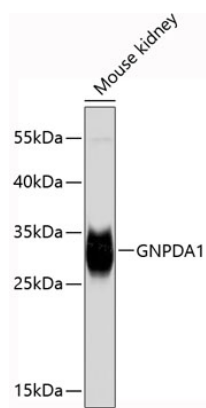
**Purification**  
Affinity purification

### Storage

Store at 4°C. Avoid freeze / thaw cycles.  
Buffer: PBS with 0.02% sodium azide,pH7.3.

## Validation Data

---



Western blot analysis of lysates from mouse kidney, using GNPDA1 Mouse mAb (A4358).

Secondary antibody: HRP-conjugated Goat anti-Mouse IgG (H+L) (AS003) at 1:10000 dilution.

Lysates/proteins: 25µg per lane.

Blocking buffer: 3% nonfat dry milk in TBST.