

A4319

Leader in Biomolecular Solutions for Life Science



# C14orf2 Rabbit pAb

Catalog No.: A4319

## Basic Information

### Observed MW

10kDa

### Calculated MW

7kDa

### Category

Polyclonal Antibody

### Applications

WB

### Cross-Reactivity

Human

## Background

Predicted to be located in mitochondrion. Predicted to be integral component of membrane. Predicted to be part of mitochondrial proton-transporting ATP synthase complex.

## Recommended Dilutions

WB 1:500 - 1:1000

## Immunogen Information

### Gene ID

9556

### Swiss Prot

P56378

### Immunogen

Synthetic peptide. This information is considered to be commercially sensitive.

### Synonyms

MLQ; MP68; PLPM; 6.8PL; ATP5MPL; C14orf2

## Contact



[www.abclonal.com](http://www.abclonal.com)

## Product Information

### Source

Rabbit

### Isotype

IgG

### Purification

Affinity purification

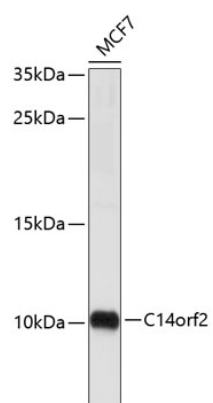
### Storage

Store at 4°C. Avoid freeze / thaw cycles.

Buffer: PBS with 0.02% sodium azide, pH7.3.

## Validation Data

---



Western blot analysis of lysates from MCF-7 cells, using C14orf2 Rabbit pAb (A4319).  
Secondary antibody: HRP-conjugated Goat anti-Rabbit IgG (H+L) (AS014) at 1:10000 dilution.

Lysates/proteins: 25µg per lane.

Blocking buffer: 3% nonfat dry milk in TBST.