

A4316

Leader in Biomolecular Solutions for Life Science



GOSR1 Rabbit pAb

Catalog No.: A4316 **2 Publications**

Basic Information

Observed MW

29kDa

Calculated MW

29kDa

Category

Polyclonal Antibody

Applications

WB,ELISA

Cross-Reactivity

Human,Mouse

Background

This gene encodes a trafficking membrane protein which transports proteins among the endoplasmic reticulum and the Golgi and between Golgi compartments. This protein is considered an essential component of the Golgi SNAP receptor (SNARE) complex. Alternatively spliced transcript variants encoding distinct isoforms have been found for this gene.

Recommended Dilutions

WB 1:500 - 1:2000

ELISA Recommended starting concentration is 1 µg/mL. Please optimize the concentration based on your specific assay requirements.

Immunogen Information

Gene ID
9527

Swiss Prot
O95249

Immunogen

Recombinant protein (or fragment). This information is considered to be commercially sensitive.

Synonyms

P28; GS28; GOS28; GOLIM2; GOS-28; GOS28/P28; GOSR1

Contact

 www.abclonal.com

Product Information

Source
Rabbit

Isotype
IgG

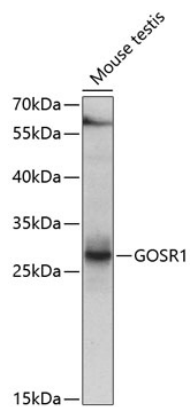
Purification
Affinity purification

Storage

Store at -20°C. Avoid freeze / thaw cycles.

Buffer: PBS with 0.02% sodium azide, 50% glycerol, pH7.3.

Validation Data



Western blot analysis of lysates from mouse testis, using GOSR1 Rabbit pAb (A4316) at 1:1000 dilution. Secondary antibody: HRP-conjugated Goat anti-Rabbit IgG (H+L) (AS014) at 1:10000 dilution. Lysates/proteins: 25µg per lane. Blocking buffer: 3% nonfat dry milk in TBST. Detection: ECL Enhanced Kit (RM00021). Exposure time: 15s.