

A4306

Leader in Biomolecular Solutions for Life Science



GATA4 Rabbit mAb

Catalog No.: A4306 **Recombinant**

Basic Information

Observed MW

55kDa

Calculated MW

45kDa

Category

SMab Recombinant Monoclonal
Antibody

Applications

WB,IHC-P,ELISA

Cross-Reactivity

Mouse,Rat

CloneNo number

ARC51718

Recommended Dilutions

WB 1:1000 - 1:2000

IHC-P 1:200 - 1:2000

ELISA Recommended starting concentration is 1 µg/mL. Please optimize the concentration based on your specific assay requirements.

Contact

 www.abclonal.com

Background

This gene encodes a member of the GATA family of zinc-finger transcription factors. Members of this family recognize the GATA motif which is present in the promoters of many genes. This protein is thought to regulate genes involved in embryogenesis and in myocardial differentiation and function, and is necessary for normal testicular development. Mutations in this gene have been associated with cardiac septal defects. Additionally, alterations in gene expression have been associated with several cancer types. Alternative splicing results in multiple transcript variants.

Immunogen Information

| Gene ID | Swiss Prot |
|---------|------------|
| 2626 | P43694 |

Immunogen

A synthetic peptide corresponding to a sequence within amino acids 343-442 of human GATA4 (NP_002043.2).

Synonyms

TOF; ASD2; VSD1; TACHD; GATA4

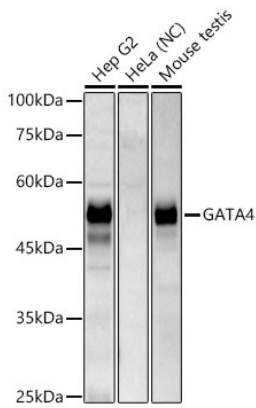
Product Information

| Source | Isotype | Purification |
|--------|---------|-----------------------|
| Rabbit | IgG | Affinity purification |

Storage

Store at -20°C. Avoid freeze / thaw cycles.
Buffer: PBS with 0.05% proclin300,0.05% BSA,50% glycerol,pH7.3.

Validation Data



Western blot analysis of lysates from mouse testis, using GATA4 Rabbit mAb (A4306) at 1:1000 dilution.

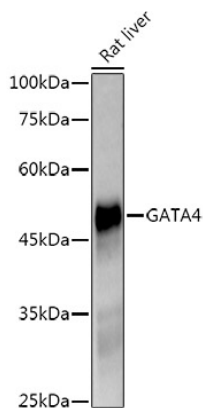
Secondary antibody: HRP-conjugated Goat anti-Rabbit IgG (H+L) (AS014) at 1:10000 dilution.

Lysates/proteins: 25µg per lane.

Blocking buffer: 3% nonfat dry milk in TBST.

Detection: ECL Basic Kit (RM00020).

Exposure time: 180s.



Western blot analysis of lysates from Rat liver, using GATA4 Rabbit mAb (A4306) at 1:1000 dilution.

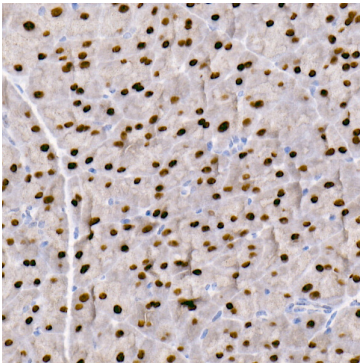
Secondary antibody: HRP-conjugated Goat anti-Rabbit IgG (H+L) (AS014) at 1:10000 dilution.

Lysates/proteins: 25µg per lane.

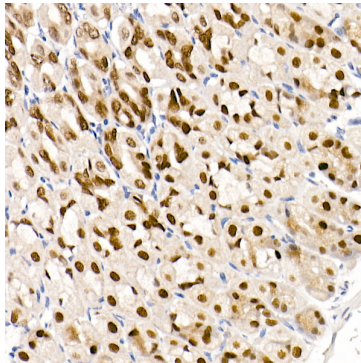
Blocking buffer: 3% nonfat dry milk in TBST.

Detection: ECL Enhanced Kit (RM00021).

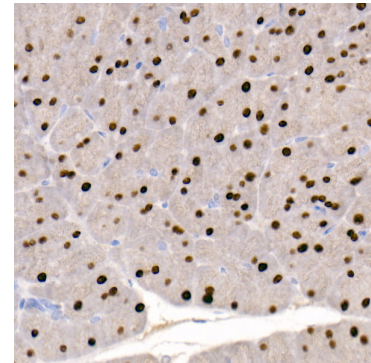
Exposure time: 90s.



Immunohistochemistry analysis of paraffin-embedded Mouse pancreas using GATA4 Rabbit mAb (A4306) at dilution of 1:100 (40x lens). High pressure antigen retrieval performed with 0.01M Citrate Bufferr (pH 6.0) prior to IHC staining.

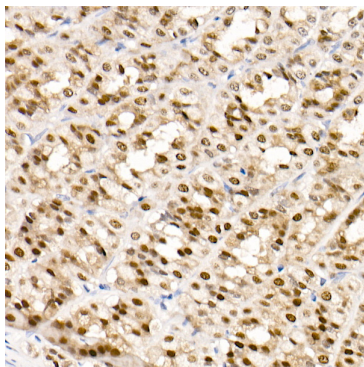


Immunohistochemistry analysis of paraffin-embedded Mouse stomach using GATA4 Rabbit mAb (A4306) at dilution of 1:100 (40x lens). High pressure antigen retrieval performed with 0.01M Citrate Bufferr (pH 6.0) prior to IHC staining.



Immunohistochemistry analysis of paraffin-embedded Rat pancreas using GATA4 Rabbit mAb (A4306) at dilution of 1:100 (40x lens). High pressure antigen retrieval performed with 0.01M Citrate Bufferr (pH 6.0) prior to IHC staining.

Validation Data



Immunohistochemistry analysis of paraffin-embedded Rat stomach using GATA4 Rabbit mAb (A4306) at dilution of 1:100 (40x lens). High pressure antigen retrieval performed with 0.01M Citrate Bufferr (pH 6.0) prior to IHC staining.