

A4296

Leader in Biomolecular Solutions for Life Science



DDR2 Rabbit mAb

Catalog No.: A4296 **Recombinant**

Basic Information

Observed MW

110kDa

Calculated MW

97kDa

Category

SMab Recombinant Monoclonal Antibody

Applications

WB,ELISA

Cross-Reactivity

Human,Mouse,Rat

CloneNo number

ARC0958

Recommended Dilutions

WB 1:1000 - 1:6000

ELISA Recommended starting concentration is 1 µg/mL. Please optimize the concentration based on your specific assay requirements.

Contact

 www.abclonal.com

Background

This gene encodes a member of the discoidin domain receptor subclass of the receptor tyrosine kinase (RTKs) protein family. RTKs play a key role in the communication of cells with their microenvironment. The encoded protein is a collagen-induced receptor that activates signal transduction pathways involved in cell adhesion, proliferation, and extracellular matrix remodeling. This protein is expressed in numerous cell types and may also be involved in wound repair and regulate tumor growth and invasiveness. Mutations in this gene are the cause of short limb-hand type spondylometaphyseal dysplasia.

Immunogen Information

Gene ID	Swiss Prot
4921	Q16832

Immunogen

A synthetic peptide corresponding to a sequence within amino acids 756-855 of human DDR2 (Q16832).

Synonyms

TKT; WRCN; MIG20a; NTRKR3; TYRO10; DDR2

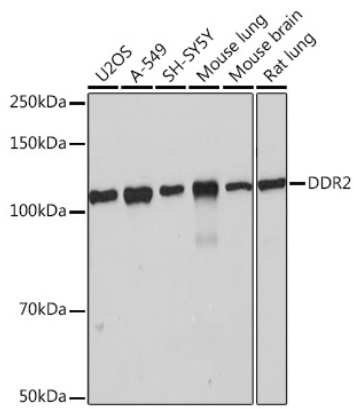
Product Information

Source	Isotype	Purification
Rabbit	IgG	Affinity purification

Storage

Store at -20°C. Avoid freeze / thaw cycles.
Buffer: PBS with 0.02% sodium azide,0.05% BSA,50% glycerol,pH7.3.

Validation Data



Western blot analysis of various lysates using DDR2 Rabbit mAb (A4296) at 1:1000 dilution.

Secondary antibody: HRP-conjugated Goat anti-Rabbit IgG (H+L) (AS014) at 1:10000 dilution.

Lysates/proteins: 25µg per lane.

Blocking buffer: 3% nonfat dry milk in TBST.

Detection: ECL Basic Kit (RM00020).

Exposure time: 10s.