

A4275

Leader in Biomolecular Solutions for Life Science



## [KO Validated] SMARCC1/BAF155 Rabbit mAb

Catalog No.: A4275

**KO** Validated

Recombinant

### Basic Information

#### Observed MW

155kDa/

#### Calculated MW

123kDa

#### Category

SMab Recombinant Monoclonal  
Antibody

#### Applications

WB,IF/ICC,ChIP,ELISA

#### Cross-Reactivity

Human,Mouse

#### CloneNo number

ARC0948

### Background

The protein encoded by this gene is a member of the SWI/SNF family of proteins, whose members display helicase and ATPase activities and which are thought to regulate transcription of certain genes by altering the chromatin structure around those genes. The encoded protein is part of the large ATP-dependent chromatin remodeling complex SNF/SWI and contains a predicted leucine zipper motif typical of many transcription factors.

### Recommended Dilutions

**WB** 1:500 - 1:2000

**IF/ICC** 1:50 - 1:200

**ELISA** Recommended starting concentration is 1 µg/mL. Please optimize the concentration based on your specific assay requirements.

**ChIP** 5µg antibody for 10µg-15µg of Chromatin

### Contact



[www.abclonal.com](http://www.abclonal.com)

### Immunogen Information

#### Gene ID

6599

#### Swiss Prot

Q92922

#### Immunogen

Recombinant protein (or fragment). This information is considered to be commercially sensitive.

#### Synonyms

HYC5; Rsc8; SRG3; SWI3; BAF155; CRACC1; 55

### Product Information

#### Source

Rabbit

#### Isotype

IgG

#### Purification

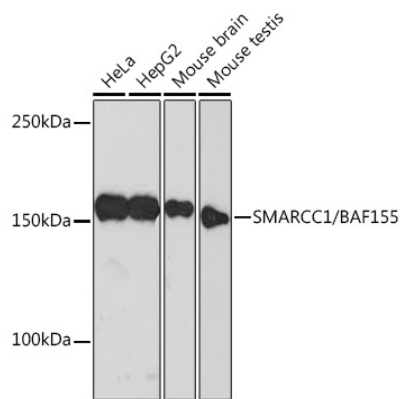
Affinity purification

#### Storage

Store at -20°C. Avoid freeze / thaw cycles.

Buffer: PBS with 0.02% sodium azide, 0.05% BSA, 50% glycerol, pH7.3.

## Validation Data



Western blot analysis of various lysates using SMARCC1/BAF155 Rabbit mAb (A4275) at 1:500 dilution.

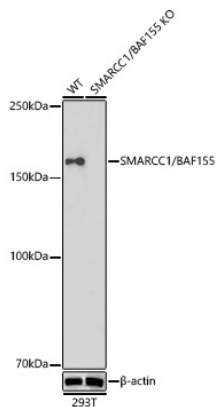
Secondary antibody: HRP-conjugated Goat anti-Rabbit IgG (H+L) (AS014) at 1:10000 dilution.

Lysates/proteins: 25µg per lane.

Blocking buffer: 3% nonfat dry milk in TBST.

Detection: ECL Basic Kit (RM00020).

Exposure time: 3min.



Western blot analysis of lysates from wild type (WT) and SMARCC1/BAF155 knockout (KO) 293T cells using [KO Validated] SMARCC1/BAF155 Rabbit mAb (A4275) at 1:1000 dilution incubated overnight at 4°C.

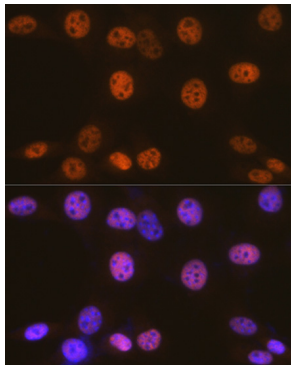
Secondary antibody: HRP-conjugated Goat anti-Rabbit IgG (H+L) (AS014) at 1:10000 dilution.

Lysates/proteins: 25 µg per lane.

Blocking buffer: 3% nonfat dry milk in TBST.

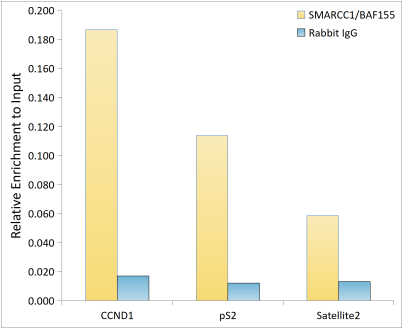
Detection: ECL Enhanced Kit (RM00021).

Exposure time: 30s.



Immunofluorescence analysis of NIH-3T3 cells using SMARCC1/BAF155 Rabbit mAb (A4275) at dilution of 1:100 (40x lens). Secondary antibody: Cy3-conjugated Goat anti-Rabbit IgG (H+L) (AS007) at 1:500 dilution. Blue: DAPI for nuclear staining.

## Validation Data



Chromatin immunoprecipitation analysis of extracts of MCF7 beta-estradiol cells, using SMARCC1/BAF155 antibody (A4275) and rabbit IgG. The amount of immunoprecipitated DNA was checked by quantitative PCR. Histogram was constructed by the ratios of the immunoprecipitated DNA to the input.