

A4273

Leader in Biomolecular Solutions for Life Science



RABEP1 Rabbit pAb

Catalog No.: A4273

Basic Information

Observed MW

114kDa

Calculated MW

99kDa

Category

Polyclonal Antibody

Applications

WB

Cross-Reactivity

Human, Mouse

Background

Enables protein domain specific binding activity and protein homodimerization activity. Involved in vesicle-mediated transport. Located in endocytic vesicle and endosome. Part of protein-containing complex.

Recommended Dilutions

WB 1:500 - 1:1000

Immunogen Information

Gene ID

9135

Swiss Prot

Q15276

Immunogen

A synthetic Peptide of human RABEP1

Synonyms

RAB5EP; RABPT5; RABEP1

Contact



www.abclonal.com

Product Information

Source

Rabbit

Isotype

IgG

Purification

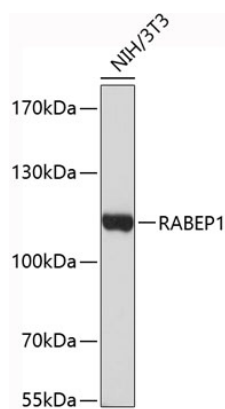
Affinity purification

Storage

Store at 4°C. Avoid freeze / thaw cycles.

Buffer: PBS with 0.02% sodium azide, pH7.3.

Validation Data



Western blot analysis of extracts of NIH/3T3 cells, using RABEP1 antibody (A4273).
Secondary antibody: HRP Goat Anti-Rabbit IgG (H+L) (A5014) at 1:10000 dilution.
Lysates/proteins: 25µg per lane.
Blocking buffer: 3% nonfat dry milk in TBST.