

A4224

Leader in Biomolecular Solutions for Life Science



MAP4K3 Mouse mAb

Catalog No.: A4224

Basic Information

Observed MW

109kDa

Calculated MW

101kDa

Category

Monoclonal Antibody

Applications

WB,IHC-P,ELISA

Cross-Reactivity

Human

Background

This gene encodes a member of the mitogen-activated protein kinase kinase kinase family. The encoded protein activates key effectors in cell signalling, among them c-Jun. Alternatively spliced transcripts encoding multiple isoforms have been observed for this gene.

Recommended Dilutions

WB 1:500 - 1:1000

IHC-P 1:20 - 1:50

ELISA Recommended starting concentration is 1 µg/mL. Please optimize the concentration based on your specific assay requirements.

Immunogen Information

Gene ID

8491

Swiss Prot

Q8IVH8

Immunogen

Synthetic peptide. This information is considered to be commercially sensitive.

Synonyms

GLK; MEKKK3; MEKKK 3; MAPKKKK3; RAB8IPL1; MAP4K3

Contact



www.abclonal.com

Product Information

Source

Mouse

Isotype

IgG

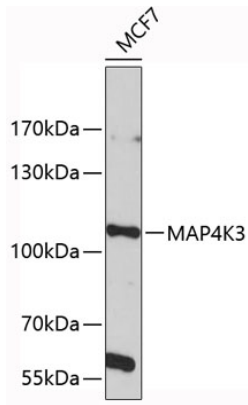
Purification

Affinity purification

Storage

Store at 4°C. Avoid freeze / thaw cycles.
Buffer: PBS with 0.02% sodium azide,pH7.3.

Validation Data



Western blot analysis of lysates from MCF-7 cells, using MAP4K3 Mouse mAb (A4224).
Secondary antibody: HRP-conjugated Goat anti-Mouse IgG (H+L) (AS003) at 1:10000 dilution.

Lysates/proteins: 25µg per lane.

Blocking buffer: 3% nonfat dry milk in TBST.