

A4132

Leader in Biomolecular Solutions for Life Science



# HSPA13 Rabbit pAb

Catalog No.: A4132

## Basic Information

---

**Observed MW**

65kDa

**Calculated MW**

52kDa

**Category**

Polyclonal Antibody

**Applications**

WB,IF/ICC,ELISA

**Cross-Reactivity**

Human,Mouse,Rat

## Background

---

The protein encoded by this gene is a member of the heat shock protein 70 family and is found associated with microsomes. Members of this protein family play a role in the processing of cytosolic and secretory proteins, as well as in the removal of denatured or incorrectly-folded proteins. The encoded protein contains an ATPase domain and has been shown to associate with a ubiquitin-like protein.

## Recommended Dilutions

---

**WB** 1:500 - 1:2000

**IF/ICC** 1:50 - 1:100

## Immunogen Information

---

**Gene ID**

6782

**Swiss Prot**

P48723

**Immunogen**

Recombinant fusion protein containing a sequence corresponding to amino acids 165-471 of human HSPA13 (NP\_008879.3).

**Synonyms**

STCH; HSPA13

## Contact

---

 [www.abclonal.com](http://www.abclonal.com)

## Product Information

---

**Source**

Rabbit

**Isotype**

IgG

**Purification**

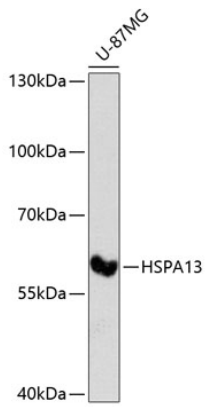
Affinity purification

**Storage**

Store at -20°C. Avoid freeze / thaw cycles.

Buffer: PBS with 0.02% sodium azide,50% glycerol,pH7.3.

## Validation Data



Western blot analysis of lysates from U-87MG cells, using HSPA13 Rabbit pAb (A4132) at 1:3000 dilution.

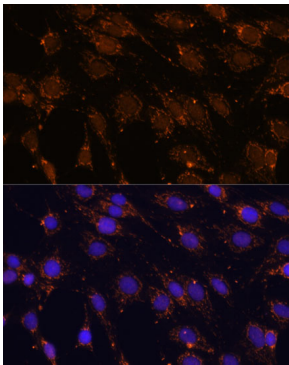
Secondary antibody: HRP Goat Anti-Rabbit IgG (H+L) (AS014) at 1:10000 dilution.

Lysates/proteins: 25µg per lane.

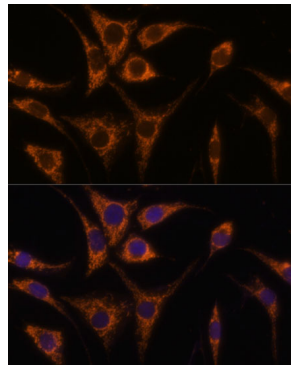
Blocking buffer: 3% nonfat dry milk in TBST.

Detection: ECL Enhanced Kit (RM00021).

Exposure time: 90s.



Immunofluorescence analysis of C6 cells using HSPA13 Rabbit pAb (A4132) at dilution of 1:100 (40x lens). Secondary antibody: Cy3 Goat Anti-Rabbit IgG (H+L) (AS007) at 1:500 dilution. Blue: DAPI for nuclear staining.



Immunofluorescence analysis of L929 cells using HSPA13 Rabbit pAb (A4132) at dilution of 1:100 (40x lens). Secondary antibody: Cy3 Goat Anti-Rabbit IgG (H+L) (AS007) at 1:500 dilution. Blue: DAPI for nuclear staining.