

A4089

Leader in Biomolecular Solutions for Life Science



## RPL31 Rabbit pAb

Catalog No.: A4089

### Basic Information

#### Observed MW

14kDa

#### Calculated MW

14kDa

#### Category

Polyclonal Antibody

#### Applications

WB,FC

#### Cross-Reactivity

Human

### Background

Ribosomes, the organelles that catalyze protein synthesis, consist of a small 40S subunit and a large 60S subunit. Together these subunits are composed of 4 RNA species and approximately 80 structurally distinct proteins. This gene encodes a ribosomal protein that is a component of the 60S subunit. The protein belongs to the L31E family of ribosomal proteins. It is located in the cytoplasm. Higher levels of expression of this gene in familial adenomatous polyps compared to matched normal tissues have been observed. As is typical for genes encoding ribosomal proteins, there are multiple processed pseudogenes of this gene dispersed through the genome. Alternatively spliced transcript variants encoding distinct isoforms have been found for this gene.

### Recommended Dilutions

WB 1:500 - 1:1000

FC 1:20 - 1:50

### Immunogen Information

#### Gene ID

6160

#### Swiss Prot

P62899

#### Immunogen

Synthetic peptide. This information is considered to be commercially sensitive.

#### Synonyms

L31; eL31; RPL31

### Contact



[www.abclonal.com](http://www.abclonal.com)

### Product Information

#### Source

Rabbit

#### Isotype

IgG

#### Purification

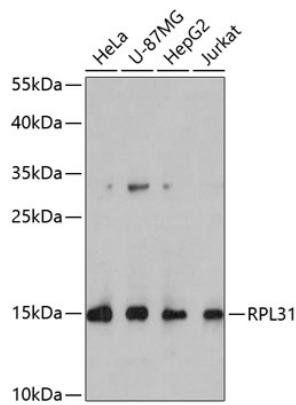
Affinity purification

#### Storage

Store at 4°C. Avoid freeze / thaw cycles.

Buffer: PBS with 0.02% sodium azide, pH7.3.

## Validation Data



Western blot analysis of various lysates using RPL31 Rabbit pAb (A4089) at 1:1000 dilution.

Secondary antibody: HRP-conjugated Goat anti-Rabbit IgG (H+L) (AS014) at 1:10000 dilution.

Lysates/proteins: 25µg per lane.

Blocking buffer: 3% nonfat dry milk in TBST.

Detection: ECL Basic Kit (RM00020).

Exposure time: 90s.