

A4040

Leader in Biomolecular Solutions for Life Science



PRCP Rabbit pAb

Catalog No.: A4040

Basic Information

Observed MW

56kDa

Calculated MW

56kDa

Category

Polyclonal Antibody

Applications

WB,ELISA

Cross-Reactivity

Rat

Background

This gene encodes a member of the peptidase S28 family of serine exopeptidases. The encoded preproprotein is proteolytically processed to generate the mature lysosomal prolylcarboxypeptidase. This enzyme cleaves C-terminal amino acids linked to proline in peptides such as angiotension II, III and des-Arg9-bradykinin. The cleavage occurs at acidic pH, but the enzyme activity is retained with some substrates at neutral pH. This enzyme has been shown to be an activator of the cell matrix-associated prekallikrein. The importance of angiotension II, one of the substrates of this enzyme, in regulating blood pressure and electrolyte balance suggests that this gene may be related to essential hypertension. A pseudogene of this gene has been identified on chromosome 2. Alternative splicing results in multiple transcript variants, at least one of which encodes an isoform that is proteolytically processed.

Recommended Dilutions

WB 1:1000 - 1:2000

Immunogen Information

Gene ID

5547

Swiss Prot

P42785

Immunogen

Recombinant fusion protein containing a sequence corresponding to amino acids 407-496 of human PRCP (NP_005031.1).

Synonyms

PCP; HUMPCP; PRCP

Contact



www.abclonal.com

Product Information

Source

Rabbit

Isotype

IgG

Purification

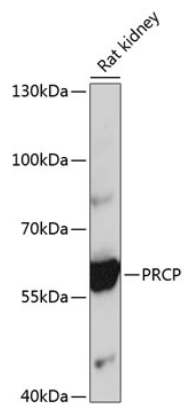
Affinity purification

Storage

Store at -20°C. Avoid freeze / thaw cycles.

Buffer: PBS with 0.02% sodium azide, 50% glycerol, pH7.3.

Validation Data



Western blot analysis of lysates from rat kidney, using PRCP Rabbit pAb (A4040) at 1:1000 dilution.

Secondary antibody: HRP Goat Anti-Rabbit IgG (H+L) (AS014) at 1:10000 dilution.

Lysates/proteins: 25µg per lane.

Blocking buffer: 3% nonfat dry milk in TBST.

Detection: ECL Basic Kit (RM00020).

Exposure time: 10s.