

A4007

Leader in Biomolecular Solutions for Life Science



## NDUFAF1 Rabbit mAb

Catalog No.: A4007

Recombinant

### Basic Information

#### Observed MW

35kDa

#### Calculated MW

38kDa

#### Category

SMab Recombinant Monoclonal  
Antibody

#### Applications

WB,IF/ICC,ELISA

#### Cross-Reactivity

Human

#### CloneNo number

ARC2091

### Background

This gene encodes a complex I assembly factor protein. Complex I (NADH-ubiquinone oxidoreductase) catalyzes the transfer of electrons from NADH to ubiquinone (coenzyme Q) in the first step of the mitochondrial respiratory chain, resulting in the translocation of protons across the inner mitochondrial membrane. The encoded protein is required for assembly of complex I, and mutations in this gene are a cause of mitochondrial complex I deficiency. Alternatively spliced transcript variants have been observed for this gene, and a pseudogene of this gene is located on the long arm of chromosome 19.

### Recommended Dilutions

WB 1:500 - 1:2000

IF/ICC 1:50 - 1:200

### Immunogen Information

#### Gene ID

51103

#### Swiss Prot

Q9Y375

#### Immunogen

Recombinant fusion protein containing a sequence corresponding to amino acids 1-150 of human NDUFAF1 (Q9Y375).

#### Synonyms

CGI65; CIA30; CGI-65; MC1DN11; NDUFAF1

### Contact



[www.abclonal.com](http://www.abclonal.com)

### Product Information

#### Source

Rabbit

#### Isotype

IgG

#### Purification

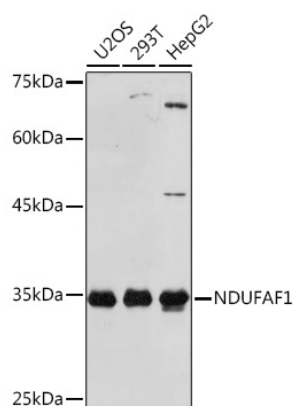
Affinity purification

#### Storage

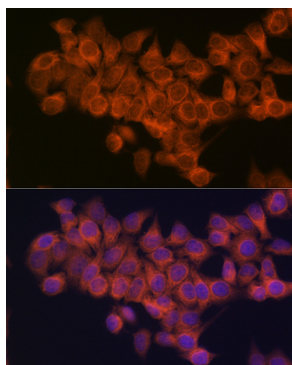
Store at -20°C. Avoid freeze / thaw cycles.

Buffer: PBS with 0.02% sodium azide, 0.05% BSA, 50% glycerol, pH 7.3.

## Validation Data



Western blot analysis of extracts of various cell lines, using NDUF1 Rabbit mAb (A4007) at 1:1000 dilution.  
Secondary antibody: HRP Goat Anti-Rabbit IgG (H+L) (AS014) at 1:10000 dilution.  
Lysates/proteins: 25µg per lane.  
Blocking buffer: 3% nonfat dry milk in TBST.  
Detection: ECL Basic Kit (RM00020).  
Exposure time: 10s.



Immunofluorescence analysis of HeLa cells using NDUF1 Rabbit mAb (A4007) at dilution of 1:100 (40x lens). Blue: DAPI for nuclear staining.