

A3968

Leader in Biomolecular Solutions for Life Science



G3BP1 Rabbit mAb

Catalog No.: A3968

Recombinant

5 Publications

Basic Information

Observed MW

68kDa

Calculated MW

52kDa

Category

SMab Recombinant Monoclonal Antibody

Applications

WB,IF/ICC,IP,ELISA

Cross-Reactivity

Human,Mouse,Rat

CloneNo number

ARC0875

Background

This gene encodes one of the DNA-unwinding enzymes which prefers partially unwound 3'-tailed substrates and can also unwind partial RNA/DNA and RNA/RNA duplexes in an ATP-dependent fashion. This enzyme is a member of the heterogeneous nuclear RNA-binding proteins and is also an element of the Ras signal transduction pathway. It binds specifically to the Ras-GTPase-activating protein by associating with its SH3 domain. Several alternatively spliced transcript variants of this gene have been described, but the full-length nature of some of these variants has not been determined.

Recommended Dilutions

WB 1:1000 - 1:6000

IF/ICC 1:100 - 1:1000

IP 0.5µg-4µg antibody for 200µg-400µg extracts of whole cells

ELISA Recommended starting concentration is 1 µg/mL. Please optimize the concentration based on your specific assay requirements.

Immunogen Information

Gene ID

10146

Swiss Prot

Q13283

Immunogen

A synthetic peptide corresponding to a sequence within amino acids 350-450 of human G3BP1 (Q13283).

Synonyms

G3BP; HDH-VIII; G3BP1

Product Information

Source

Rabbit

Isotype

IgG

Purification

Affinity purification

Storage

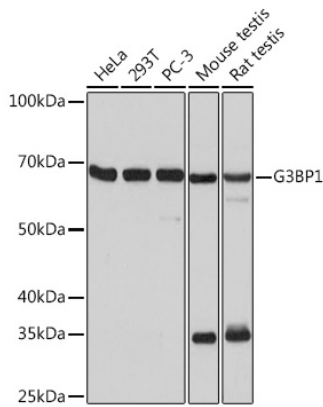
Store at -20°C. Avoid freeze / thaw cycles.

Buffer: PBS with 0.02% sodium azide,0.05% BSA,50% glycerol,pH7.3.

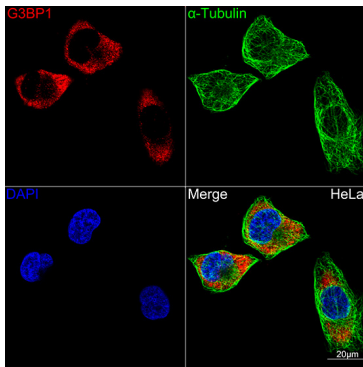
Contact

 www.abclonal.com

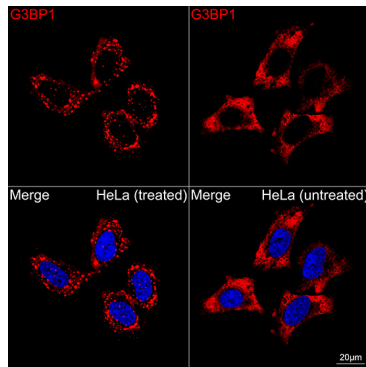
Validation Data



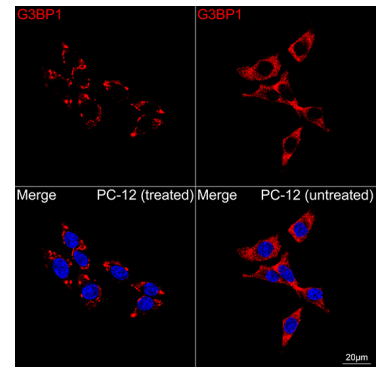
Western blot analysis of various lysates using G3BP1 Rabbit mAb (A3968) at 1:1000 dilution.
 Secondary antibody: HRP-conjugated Goat anti-Rabbit IgG (H+L) (AS014) at 1:10000 dilution.
 Lysates/proteins: 25µg per lane.
 Blocking buffer: 3% nonfat dry milk in TBST.
 Detection: ECL Basic Kit (RM00020).
 Exposure time: 10s.



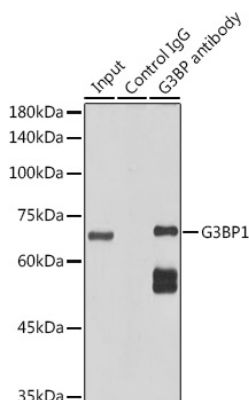
Confocal imaging of HeLa cells using G3BP1 Rabbit mAb (A3968, dilution 1:100) (Red). The cells were counterstained with α -Tubulin Mouse mAb (AC012, dilution 1:400) (Green). DAPI was used for nuclear staining (blue). Objective: 100x.



Confocal imaging of HeLa cells (treated with sodium arsenite) and HeLa cells (untreated) using G3BP1 Rabbit mAb (A3968, dilution 1:100) followed by a further incubation with Cy3 Goat Anti-Rabbit IgG (H+L) (AS007, dilution 1:500) (Red). DAPI was used for nuclear staining (Blue). Objective: 100x.



Confocal imaging of PC-12 cells (treated with sodium arsenite) and PC-12 cells (untreated) using G3BP1 Rabbit mAb (A3968, dilution 1:100) followed by a further incubation with Cy3 Goat Anti-Rabbit IgG (H+L) (AS007, dilution 1:500) (Red). DAPI was used for nuclear staining (Blue). Objective: 100x.



Immunoprecipitation analysis of 300 µg extracts of HeLa cells using 3 µg G3BP1 Rabbit mAb (A3968). Western blot was performed from the immunoprecipitate using G3BP1 Rabbit mAb (A3968) at a dilution of 1:1000.