

A3901

Leader in Biomolecular Solutions for Life Science



# GPS2 Rabbit pAb

Catalog No.: A3901 **2 Publications**

## Basic Information

### Observed MW

37kDa

### Calculated MW

20kDa

### Category

Polyclonal Antibody

### Applications

WB,IP,ELISA

### Cross-Reactivity

Human,Mouse,Rat

## Background

Enables transcription coactivator activity and transcription corepressor activity. Involved in several processes, including negative regulation of protein K63-linked ubiquitination; regulation of signal transduction; and regulation of transcription by RNA polymerase II. Located in mitochondrion and nucleus. Part of transcription repressor complex. Orthologous to human GPS2 (G protein pathway suppressor 2).

## Recommended Dilutions

**WB** 1:500 - 1:2000

**IP** 0.5µg-4µg antibody for  
200µg-400µg extracts  
of whole cells

**ELISA** Recommended starting  
concentration is 1  
µg/mL. Please optimize  
the concentration  
based on your specific  
assay requirements.

## Immunogen Information

### Gene ID

56310

### Swiss Prot

### Immunogen

Synthetic peptide. This information is considered to be commercially sensitive.

### Synonyms

GPS-2; GPS2

## Product Information

### Source

Rabbit

### Isotype

IgG

### Purification

Affinity purification

### Storage

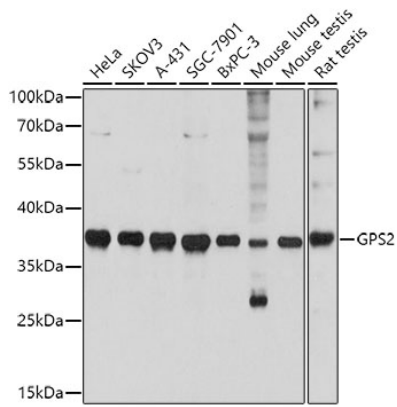
Store at -20°C. Avoid freeze / thaw cycles.

Buffer: PBS with 0.01% thimerosal, 50% glycerol, pH7.3.

## Contact

 [www.abclonal.com](http://www.abclonal.com)

## Validation Data



Western blot analysis of various lysates using GPS2 Rabbit pAb (A3901) at 1:3000 dilution.

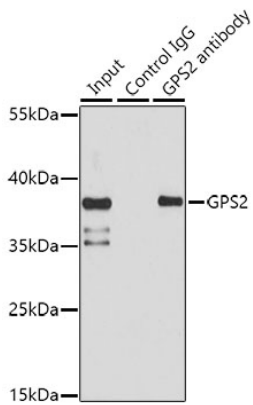
Secondary antibody: HRP-conjugated Goat anti-Rabbit IgG (H+L) (AS014) at 1:10000 dilution.

Lysates/proteins: 25µg per lane.

Blocking buffer: 3% nonfat dry milk in TBST.

Detection: ECL Basic Kit (RM00020).

Exposure time: 30s.



Immunoprecipitation analysis of 150 µg extracts of HeLa cells using 3 µg GPS2 antibody (A3901). Western blot was performed from the immunoprecipitate using GPS2 antibody (A3901) at a dilution of 1:1000.