

A3820

Leader in Biomolecular Solutions for Life Science



CYC1 Rabbit pAb

Catalog No.: A3820

Basic Information

Observed MW

33kDa

Calculated MW

35kDa

Category

Polyclonal Antibody

Applications

WB,IF/ICC

Cross-Reactivity

Human,Mouse

Background

This gene encodes a subunit of the cytochrome bc1 complex, which plays an important role in the mitochondrial respiratory chain by transferring electrons from the Rieske iron-sulfur protein to cytochrome c. Mutations in this gene may cause mitochondrial complex III deficiency, nuclear type 6.

Recommended Dilutions

WB 1:500 - 1:1000

IF/ICC 1:20 - 1:50

Immunogen Information

Gene ID

1537

Swiss Prot

P08574

Immunogen

Synthetic peptide. This information is considered to be commercially sensitive.

Synonyms

UQCR4; MC3DN6; CYC1

Contact



www.abclonal.com

Product Information

Source

Rabbit

Isotype

IgG

Purification

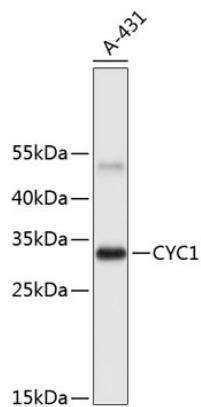
Affinity purification

Storage

Store at 4°C. Avoid freeze / thaw cycles.

Buffer: PBS with 0.02% sodium azide,pH7.3.

Validation Data



Western blot analysis of lysates from A-431 cells, using CYC1 Rabbit pAb (A3820).
Secondary antibody: HRP-conjugated Goat anti-Rabbit IgG (H+L) (AS014) at 1:10000 dilution.
Lysates/proteins: 25µg per lane.
Blocking buffer: 3% nonfat dry milk in TBST.