

A3806

Leader in Biomolecular Solutions for Life Science



# CPN1 Rabbit pAb

Catalog No.: A3806

## Basic Information

---

### Observed MW

55kDa

### Calculated MW

52kDa

### Category

Polyclonal Antibody

### Applications

WB

### Cross-Reactivity

Human, Mouse

## Background

---

Carboxypeptidase N is a plasma metallo-protease that cleaves basic amino acids from the C terminal of peptides and proteins. The enzyme is important in the regulation of peptides like kinins and anaphylatoxins, and has also been known as kininase-1 and anaphylatoxin inactivator. This enzyme is a tetramer comprised of two identical regulatory subunits and two identical catalytic subunits; this gene encodes the catalytic subunit. Mutations in this gene can be associated with angioedema or chronic urticaria resulting from carboxypeptidase N deficiency.

## Recommended Dilutions

---

WB 1:500 - 1:1000

## Immunogen Information

---

### Gene ID

1369

### Swiss Prot

P15169

### Immunogen

A synthetic peptide of human CPN1

### Synonyms

CPN; SCPN; CPN1

## Contact

---



[www.abclonal.com](http://www.abclonal.com)

## Product Information

---

### Source

Rabbit

### Isotype

IgG

### Purification

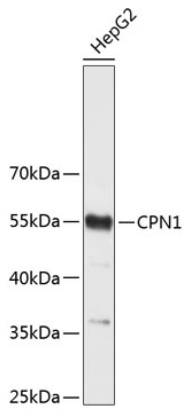
Affinity purification

### Storage

Store at 4°C. Avoid freeze / thaw cycles.  
Buffer: PBS with 0.02% sodium azide, pH7.3.

## Validation Data

---



Western blot analysis of extracts of HepG2 cells, using CPN1 antibody (A3806).  
Secondary antibody: HRP Goat Anti-Rabbit IgG (H+L) (AS014) at 1:10000 dilution.  
Lysates/proteins: 25µg per lane.  
Blocking buffer: 3% nonfat dry milk in TBST.