

A3760

Leader in Biomolecular Solutions for Life Science



BCAT1 Rabbit pAb

Catalog No.: A3760

Basic Information

Observed MW

43kDa

Calculated MW

43kDa

Category

Polyclonal Antibody

Applications

WB

Cross-Reactivity

Human, Mouse

Background

This gene encodes the cytosolic form of the enzyme branched-chain amino acid transaminase. This enzyme catalyzes the reversible transamination of branched-chain alpha-keto acids to branched-chain L-amino acids essential for cell growth. Two different clinical disorders have been attributed to a defect of branched-chain amino acid transamination: hypervalinemia and hyperleucine-isoleucinemia. As there is also a gene encoding a mitochondrial form of this enzyme, mutations in either gene may contribute to these disorders. Alternatively spliced transcript variants have been described.

Recommended Dilutions

WB 1:500 - 1:2000

Immunogen Information

Gene ID

586

Swiss Prot

P54687

Immunogen

A synthetic peptide of human BCAT1

Synonyms

BCT1; PP18; BCATC; ECA39; MECA39; PNAS121; BCAT1

Contact



www.abclonal.com

Product Information

Source

Rabbit

Isotype

IgG

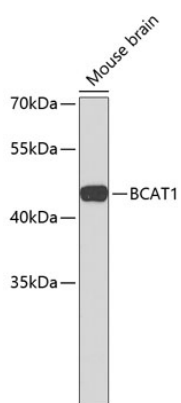
Purification

Affinity purification

Storage

Store at 4°C. Avoid freeze / thaw cycles.
Buffer: PBS with 0.02% sodium azide, pH 7.3.

Validation Data



Western blot analysis of extracts of mouse brain, using BCAT1 antibody (A3760).
Secondary antibody: HRP Goat Anti-Rabbit IgG (H+L) (AS014) at 1:10000 dilution.
Lysates/proteins: 25µg per lane.
Blocking buffer: 3% nonfat dry milk in TBST.