

A3721

Leader in Biomolecular Solutions for Life Science



# Caspr1 Rabbit mAb

Catalog No.: A3721 **Recombinant**

## Basic Information

### Observed MW

190kDa

### Calculated MW

156kDa

### Category

SMab Recombinant Monoclonal Antibody

### Applications

WB,ELISA

### Cross-Reactivity

Human

### CloneNo number

ARC2084

## Recommended Dilutions

**WB** 1:500 - 1:1000

**ELISA** Recommended starting concentration is 1 µg/mL. Please optimize the concentration based on your specific assay requirements.

## Contact

 [www.abclonal.com](http://www.abclonal.com)

## Background

The gene product was initially identified as a 190-kD protein associated with the contactin-PTPRZ1 complex. The 1,384-amino acid protein, also designated p190 or CASPR for 'contactin-associated protein,' includes an extracellular domain with several putative protein-protein interaction domains, a putative transmembrane domain, and a 74-amino acid cytoplasmic domain. Northern blot analysis showed that the gene is transcribed predominantly in brain as a transcript of 6.2 kb, with weak expression in several other tissues tested. The architecture of its extracellular domain is similar to that of neuexins, and this protein may be the signaling subunit of contactin, enabling recruitment and activation of intracellular signaling pathways in neurons.

## Immunogen Information

### Gene ID

8506

### Swiss Prot

P78357

### Immunogen

A synthetic peptide corresponding to a sequence within amino acids 700-800 of human Caspr11 (P78357).

### Synonyms

CHN3; P190; CASPR; NRXN4; CNTNAP; Caspr1

## Product Information

### Source

Rabbit

### Isotype

IgG

### Purification

Affinity purification

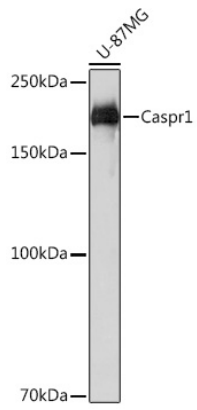
### Storage

Store at -20°C. Avoid freeze / thaw cycles.

Buffer: PBS with 0.02% sodium azide, 0.05% BSA, 50% glycerol, pH7.3.

## Validation Data

---



Western blot analysis of lysates from U-87MG cells, using Caspr11 Rabbit mAb (A3721) at 1:1000 dilution.

Secondary antibody: HRP-conjugated Goat anti-Rabbit IgG (H+L) (AS014) at 1:10000 dilution.

Lysates/proteins: 25µg per lane.

Blocking buffer: 3% nonfat dry milk in TBST.

Detection: ECL Basic Kit (RM00020).

Exposure time: 3s.