

A3698

Leader in Biomolecular Solutions for Life Science



# Plexin A1 Rabbit mAb

Catalog No.: A3698

Recombinant

1 Publications

## Basic Information

### Observed MW

230kDa/250kDa

### Calculated MW

211kDa

### Category

SMab Recombinant Monoclonal  
Antibody

### Applications

WB,ELISA

### Cross-Reactivity

Human,Mouse,Rat

### CloneNo number

ARC2077

## Background

Predicted to enable semaphorin receptor activity. Predicted to be involved in several processes, including generation of neurons; regulation of GTPase activity; and regulation of cell shape. Predicted to act upstream of or within dichotomous subdivision of terminal units involved in salivary gland branching; neuron projection morphogenesis; and regulation of smooth muscle cell migration. Located in cytosol and nucleoplasm.

## Recommended Dilutions

WB 1:500 - 1:1000

## Immunogen Information

### Gene ID

5361

### Swiss Prot

Q9UIW2

### Immunogen

A synthetic peptide corresponding to a sequence within amino acids 100-200 of human Plexin A1 (Q9UIW2).

### Synonyms

NOV; NOV; PLXN1; DWOPNED; PLEXIN-A1; Plexin A1

## Contact



[www.abclonal.com](http://www.abclonal.com)

## Product Information

### Source

Rabbit

### Isotype

IgG

### Purification

Affinity purification

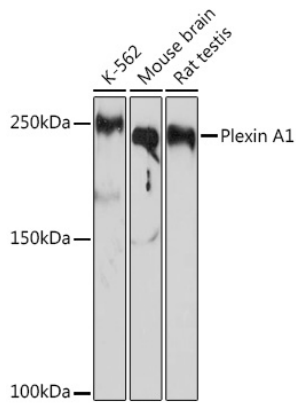
### Storage

Store at -20°C. Avoid freeze / thaw cycles.

Buffer: PBS with 0.02% sodium azide,0.05% BSA,50% glycerol,pH7.3.

## Validation Data

---



Western blot analysis of extracts of various cell lines, using Plexin A1 Rabbit mAb (A3698) at 1:1000 dilution.  
Secondary antibody: HRP Goat Anti-Rabbit IgG (H+L) (AS014) at 1:10000 dilution.  
Lysates/proteins: 25µg per lane.  
Blocking buffer: 3% nonfat dry milk in TBST.  
Detection: ECL Basic Kit (RM00020).  
Exposure time: 10s.