

A3629

Leader in Biomolecular Solutions for Life Science



PPP3CB Rabbit pAb

Catalog No.: A3629

Basic Information

Observed MW

69kDa

Calculated MW

59kDa

Category

Polyclonal Antibody

Applications

WB,ELISA

Cross-Reactivity

Human,Mouse

Background

Enables several functions, including calmodulin binding activity; calmodulin-dependent protein phosphatase activity; and protein phosphatase 2B binding activity. Involved in calcineurin-NFAT signaling cascade; positive regulation of transcription by RNA polymerase II; and protein dephosphorylation. Located in cytoplasm. Part of calcineurin complex. Implicated in aortic valve stenosis. Biomarker of focal segmental glomerulosclerosis and schizophrenia.

Recommended Dilutions

WB 1:500 - 1:2000

Immunogen Information

Gene ID

5532

Swiss Prot

P16298

Immunogen

Recombinant fusion protein containing a sequence corresponding to amino acids 286-525 of human PPP3CB (NP_001135825.1).

Synonyms

CNA2; CALNB; CALNA2; PP2Bbeta; PPP3CB

Contact



www.abclonal.com

Product Information

Source

Rabbit

Isotype

IgG

Purification

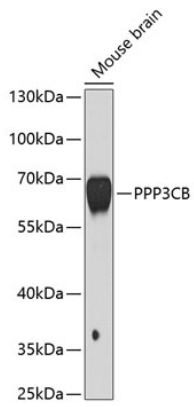
Affinity purification

Storage

Store at -20°C. Avoid freeze / thaw cycles.

Buffer: PBS with 0.02% sodium azide, 50% glycerol, pH7.3.

Validation Data



Western blot analysis of lysates from mouse brain, using PPP3CB Rabbit pAb (A3629) at 1:1000 dilution.

Secondary antibody: HRP Goat Anti-Rabbit IgG (H+L) (AS014) at 1:10000 dilution.

Lysates/proteins: 25µg per lane.

Blocking buffer: 3% nonfat dry milk in TBST.

Detection: ECL Basic Kit (RM00020).

Exposure time: 5s.