

A3598

Leader in Biomolecular Solutions for Life Science



## EGFR Mouse mAb

Catalog No.: A3598

### Basic Information

#### Observed MW

180kDa

#### Calculated MW

134kDa

#### Category

Monoclonal Antibody

#### Applications

WB,IHC-P,FC,ELISA

#### Cross-Reactivity

Human

### Background

The protein encoded by this gene is a transmembrane glycoprotein that is a member of the protein kinase superfamily. This protein is a receptor for members of the epidermal growth factor family. EGFR is a cell surface protein that binds to epidermal growth factor, thus inducing receptor dimerization and tyrosine autophosphorylation leading to cell proliferation. Mutations in this gene are associated with lung cancer. EGFR is a component of the cytokine storm which contributes to a severe form of Coronavirus Disease 2019 (COVID-19) resulting from infection with severe acute respiratory syndrome coronavirus-2 (SARS-CoV-2).

### Recommended Dilutions

**WB** 1:200 - 1:2000

**IHC-P** 1:50 - 1:200

**FC** 1:20 - 1:50

**ELISA** Recommended starting concentration is 1 µg/mL. Please optimize the concentration based on your specific assay requirements.

### Immunogen Information

#### Gene ID

1956

#### Swiss Prot

P00533

#### Immunogen

Synthetic peptide. This information is considered to be commercially sensitive.

#### Synonyms

ERBB; ERRP; HER1; mENA; ERBB1; PIG61; NISBD2; EGFR

### Product Information

#### Source

Mouse

#### Isotype

IgG

#### Purification

Affinity purification

#### Storage

Store at 4°C. Avoid freeze / thaw cycles.

Buffer: PBS with 0.02% sodium azide,pH7.3.

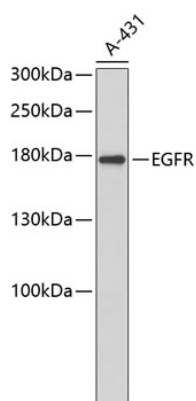
### Contact



[www.abclonal.com](http://www.abclonal.com)

## Validation Data

---



Western blot analysis of lysates from A-431 cells, using EGFR Mouse mAb (A3598).  
Secondary antibody: HRP-conjugated Goat anti-Mouse IgG (H+L) (AS003) at 1:10000 dilution.  
Lysates/proteins: 25µg per lane.  
Blocking buffer: 3% nonfat dry milk in TBST.