

A3579

Leader in Biomolecular Solutions for Life Science



# MAGOH Rabbit mAb

Catalog No.: A3579

Recombinant

## Basic Information

### Observed MW

17kDa

### Calculated MW

17kDa

### Category

SMab Recombinant Monoclonal  
Antibody

### Applications

WB,ELISA

### Cross-Reactivity

Human,Mouse,Rat

### CloneNo number

ARC2048

## Background

Drosophila that have mutations in their mago nashi (grandchildless) gene produce progeny with defects in germplasm assembly and germline development. This gene encodes the mammalian mago nashi homolog. In mammals, mRNA expression is not limited to the germ plasm, but is expressed ubiquitously in adult tissues and can be induced by serum stimulation of quiescent fibroblasts.

## Recommended Dilutions

**WB** 1:500 - 1:1000

**ELISA** Recommended starting concentration is 1 µg/mL. Please optimize the concentration based on your specific assay requirements.

## Immunogen Information

### Gene ID

4116

### Swiss Prot

P61326

### Immunogen

Synthetic peptide. This information is considered to be commercially sensitive.

### Synonyms

MAGOH1; MAGOHA; MAGOH

## Contact

 [www.abclonal.com](http://www.abclonal.com)

## Product Information

### Source

Rabbit

### Isotype

IgG

### Purification

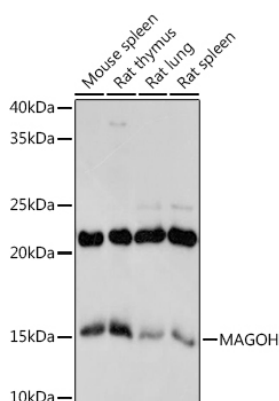
Affinity purification

### Storage

Store at -20°C. Avoid freeze / thaw cycles.

Buffer: PBS with 0.02% sodium azide,0.05% BSA,50% glycerol,pH7.3.

## Validation Data



Western blot analysis of various lysates using MAGOH Rabbit mAb (A3579) at 1:1000 dilution.

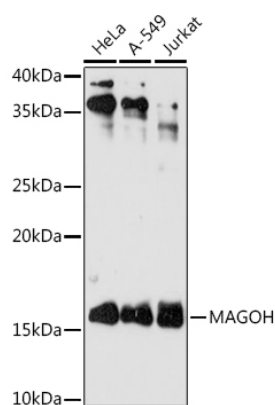
Secondary antibody: HRP-conjugated Goat anti-Rabbit IgG (H+L) (AS014) at 1:10000 dilution.

Lysates/proteins: 25µg per lane.

Blocking buffer: 3% nonfat dry milk in TBST.

Detection: ECL Basic Kit (RM00020).

Exposure time: 10s.



Western blot analysis of various lysates using MAGOH Rabbit mAb (A3579) at 1:1000 dilution.

Secondary antibody: HRP-conjugated Goat anti-Rabbit IgG (H+L) (AS014) at 1:10000 dilution.

Lysates/proteins: 25µg per lane.

Blocking buffer: 3% nonfat dry milk in TBST.

Detection: ECL Basic Kit (RM00020).

Exposure time: 180s.