

A3559

Leader in Biomolecular Solutions for Life Science



SMC4 Rabbit mAb

Catalog No.: A3559

Recombinant

Basic Information

Observed MW

180kDa

Calculated MW

147kDa

Category

SMab Recombinant Monoclonal
Antibody

Applications

WB,IF/ICC,ELISA

Cross-Reactivity

Human,Mouse,Rat

CloneNo number

ARC2042

Recommended Dilutions

WB 1:500 - 1:2000

IF/ICC 1:50 - 1:200

ELISA Recommended starting concentration is 1 µg/mL. Please optimize the concentration based on your specific assay requirements.

Contact

 www.abclonal.com

Background

This gene belongs to the 'structural maintenance of chromosomes' (SMC) gene family. Members of this gene family play a role in two changes in chromosome structure during mitotic segregation of chromosomes- chromosome condensation and sister chromatid cohesion. The protein encoded by this gene is likely a subunit of the 13S condensin complex, which is involved in chromosome condensation. A pseudogene related to this gene is located on chromosome 2.

Immunogen Information

Gene ID

10051

Swiss Prot

Q9NTJ3

Immunogen

Synthetic peptide. This information is considered to be commercially sensitive.

Synonyms

CAPC; CAP-C; SMC-4; SMC4L1; SMC4

Product Information

Source

Rabbit

Isotype

IgG

Purification

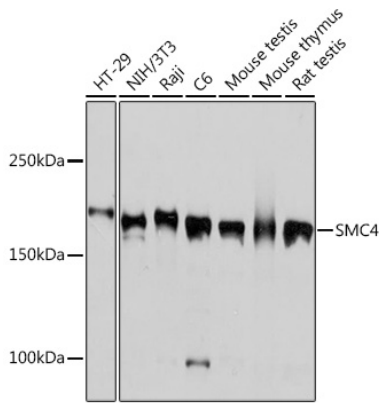
Affinity purification

Storage

Store at -20°C. Avoid freeze / thaw cycles.

Buffer: PBS containing 50% glycerol and 0.05% BSA, preserved with proclin300 or sodium azide (as specified on the Certificate of Analysis), pH 7.3.

Validation Data



Western blot analysis of various lysates using SMC4 Rabbit mAb (A3559) at 1:1000 dilution.

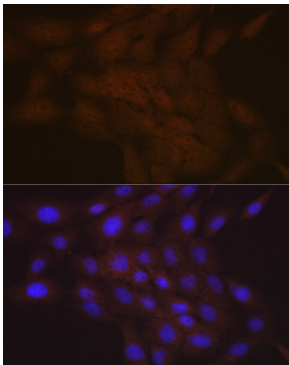
Secondary antibody: HRP-conjugated Goat anti-Rabbit IgG (H+L) (AS014) at 1:10000 dilution.

Lysates/proteins: 25µg per lane.

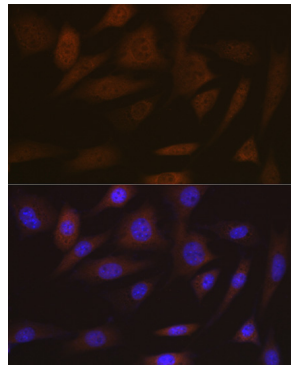
Blocking buffer: 3% nonfat dry milk in TBST.

Detection: ECL Basic Kit (RM00020).

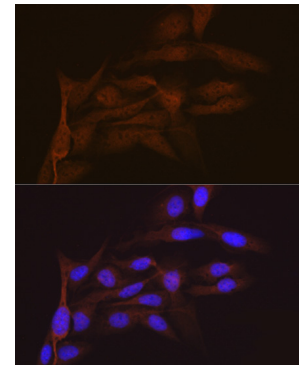
Exposure time: 1s.



Immunofluorescence analysis of C6 cells using SMC4 Rabbit mAb (A3559) at dilution of 1:100 (40x lens). Secondary antibody: Cy3-conjugated Goat anti-Rabbit IgG (H+L) (AS007) at 1:500 dilution. Blue: DAPI for nuclear staining.



Immunofluorescence analysis of NIH/3T3 cells using SMC4 Rabbit mAb (A3559) at dilution of 1:100 (40x lens). Secondary antibody: Cy3-conjugated Goat anti-Rabbit IgG (H+L) (AS007) at 1:500 dilution. Blue: DAPI for nuclear staining.



Immunofluorescence analysis of U-2 OS cells using SMC4 Rabbit mAb (A3559) at dilution of 1:100 (40x lens). Secondary antibody: Cy3-conjugated Goat anti-Rabbit IgG (H+L) (AS007) at 1:500 dilution. Blue: DAPI for nuclear staining.