

A3551

Leader in Biomolecular Solutions for Life Science



# FAM117B Rabbit pAb

Catalog No.: A3551 **1 Publications**

## Basic Information

### Observed MW

65kDa

### Calculated MW

62kDa

### Category

Polyclonal Antibody

### Applications

WB,ELISA

### Cross-Reactivity

Human,Mouse

## Background

FAM117B (Family With Sequence Similarity 117 Member B) is a Protein Coding gene. Diseases associated with FAM117B include Lateral Sclerosis and Amyotrophic Lateral Sclerosis 2, Juvenile. An important paralog of this gene is GLCCI1.

## Recommended Dilutions

**WB** 1:500 - 1:2000

**ELISA** Recommended starting concentration is 1 µg/mL. Please optimize the concentration based on your specific assay requirements.

## Immunogen Information

### Gene ID

150864

### Swiss Prot

Q6P1L5

### Immunogen

Recombinant protein (or fragment). This information is considered to be commercially sensitive.

### Synonyms

ALS2CR13; FAM117B

## Contact

 [www.abclonal.com](http://www.abclonal.com)

## Product Information

### Source

Rabbit

### Isotype

IgG

### Purification

Affinity purification

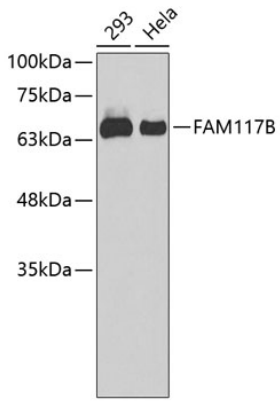
### Storage

Store at -20°C. Avoid freeze / thaw cycles.

Buffer: PBS with 0.01% thimerosal, 50% glycerol, pH7.3.

## Validation Data

---



Western blot analysis of various lysates using FAM117B Rabbit pAb (A3551).

Secondary antibody: HRP-conjugated Goat anti-Rabbit IgG (H+L) (AS014) at 1:10000 dilution.

Lysates/proteins: 25µg per lane.

Blocking buffer: 3% nonfat dry milk in TBST.