

A3530

Leader in Biomolecular Solutions for Life Science



MELK Rabbit mAb

Catalog No.: A3530

Recombinant

3 Publications

Basic Information

Observed MW

75kDa

Calculated MW

75kDa

Category

SMab Recombinant Monoclonal
Antibody

Applications

WB,ELISA

Cross-Reactivity

Human,Mouse,Rat

CloneNo number

ARC2032

Recommended Dilutions

WB 1:500 - 1:2000

ELISA Recommended starting concentration is 1 µg/mL. Please optimize the concentration based on your specific assay requirements.

Contact



www.abclonal.com

Background

Enables calcium ion binding activity; non-membrane spanning protein tyrosine kinase activity; and protein serine/threonine kinase activity. Involved in apoptotic process; cell population proliferation; and protein autophosphorylation. Located in cell cortex and plasma membrane.

Immunogen Information

Gene ID

9833

Swiss Prot

Q14680

Immunogen

Synthetic peptide. This information is considered to be commercially sensitive.

Synonyms

HPK38; MELK

Product Information

Source

Rabbit

Isotype

IgG

Purification

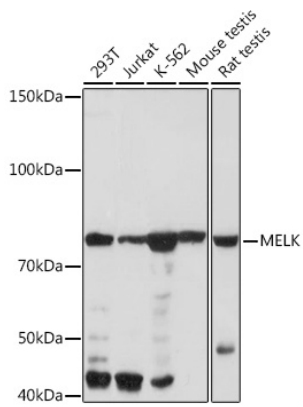
Affinity purification

Storage

Store at -20°C. Avoid freeze / thaw cycles.

Buffer: PBS containing 50% glycerol and 0.05% BSA, preserved with proclin300 or sodium azide (as specified on the Certificate of Analysis), pH 7.3.

Validation Data



Western blot analysis of various lysates using MELK Rabbit mAb (A3530) at 1:1000 dilution.

Secondary antibody: HRP-conjugated Goat anti-Rabbit IgG (H+L) (AS014) at 1:10000 dilution.

Lysates/proteins: 25 μ g per lane.

Blocking buffer: 3% nonfat dry milk in TBST.

Detection: ECL Basic Kit (RM00020).

Exposure time: 60s.