

A3525

Leader in Biomolecular Solutions for Life Science



# CHCHD6 Rabbit pAb

Catalog No.: A3525

## Basic Information

### Observed MW

26kDa

### Calculated MW

26kDa

### Category

Polyclonal Antibody

### Applications

WB

### Cross-Reactivity

Human

## Background

Involved in cellular response to DNA damage stimulus and cristae formation. Located in cytosol and mitochondrial inner membrane. Part of MICOS complex.

## Recommended Dilutions

WB 1:1000 - 1:2000

## Immunogen Information

### Gene ID

84303

### Swiss Prot

Q9BRQ6

### Immunogen

Synthetic peptide. This information is considered to be commercially sensitive.

### Synonyms

CHCM1; Mic25; MICOS25; PPP1R23; CHCHD6

## Contact



[www.abclonal.com](http://www.abclonal.com)

## Product Information

### Source

Rabbit

### Isotype

IgG

### Purification

Affinity purification

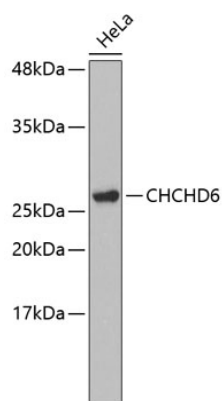
### Storage

Store at 4°C. Avoid freeze / thaw cycles.

Buffer: PBS with 0.02% sodium azide, pH7.3.

## Validation Data

---



Western blot analysis of lysates from HeLa cells, using CHCHD6 Rabbit pAb (A3525).  
Secondary antibody: HRP-conjugated Goat anti-Rabbit IgG (H+L) (AS014) at 1:10000 dilution.

Lysates/proteins: 25µg per lane.

Blocking buffer: 3% nonfat dry milk in TBST.