

A3484

Leader in Biomolecular Solutions for Life Science



ANAPC1 Rabbit pAb

Catalog No.: A3484

Basic Information

Observed MW

216kDa

Calculated MW

217kDa

Category

Polyclonal Antibody

Applications

WB,ELISA

Cross-Reactivity

Human

Background

This gene encodes a subunit of the anaphase-promoting complex. This complex is an E3 ubiquitin ligase that regulates progression through the metaphase to anaphase portion of the cell cycle by ubiquitinating proteins which targets them for degradation.

Recommended Dilutions

WB 1:1000 - 1:2000

Immunogen Information

Gene ID

64682

Swiss Prot

Q9H1A4

Immunogen

Recombinant fusion protein containing a sequence corresponding to amino acids 1-250 of human ANAPC1 (NP_073153.1).

Synonyms

APC1; MCPR; TSG24; ANAPC1

Contact



www.abclonal.com

Product Information

Source

Rabbit

Isotype

IgG

Purification

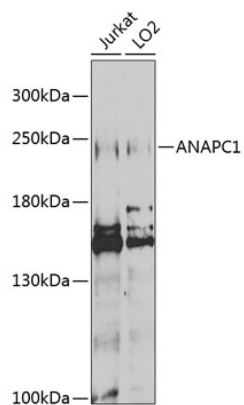
Affinity purification

Storage

Store at -20°C. Avoid freeze / thaw cycles.

Buffer: PBS with 0.02% sodium azide,50% glycerol,pH7.3.

Validation Data



Western blot analysis of extracts of various cell lines, using ANAPC1 antibody (A3484) at 1:1000 dilution.

Secondary antibody: HRP Goat Anti-Rabbit IgG (H+L) (AS014) at 1:10000 dilution.

Lysates/proteins: 25µg per lane.

Blocking buffer: 3% nonfat dry milk in TBST.

Detection: ECL Enhanced Kit (RM00021).

Exposure time: 90s.