

A3479

Leader in Biomolecular Solutions for Life Science



VIPAS39 Rabbit pAb

Catalog No.: A3479

Basic Information

Observed MW

57kDa

Calculated MW

57kDa

Category

Polyclonal Antibody

Applications

WB,ELISA

Cross-Reactivity

Human,Mouse

Background

Involved in endosome to lysosome transport and intracellular protein transport. Acts upstream of or within collagen metabolic process and peptidyl-lysine hydroxylation. Located in Golgi apparatus and endosome. Implicated in arthrogryposis, renal dysfunction, and cholestasis 2.

Recommended Dilutions

WB 1:500 - 1:2000

ELISA Recommended starting concentration is 1 µg/mL. Please optimize the concentration based on your specific assay requirements.

Immunogen Information

Gene ID

63894

Swiss Prot

Q9H9C1

Immunogen

Recombinant protein (or fragment). This information is considered to be commercially sensitive.

Synonyms

SPE39; VIPAR; SPE-39; VPS16B; hSPE-39; C14orf133; VIPAS39

Contact



www.abclonal.com

Product Information

Source

Rabbit

Isotype

IgG

Purification

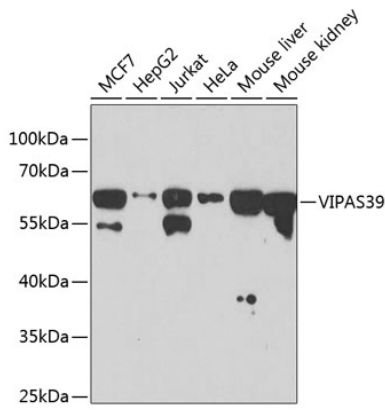
Affinity purification

Storage

Store at -20°C. Avoid freeze / thaw cycles.

Buffer: PBS containing 50% glycerol, preserved with proclin300 or sodium azide (as specified on the Certificate of Analysis), pH 7.3.

Validation Data



Western blot analysis of various lysates using VIPAS39 Rabbit pAb (A3479) at 1:1000 dilution.

Secondary antibody: HRP-conjugated Goat anti-Rabbit IgG (H+L) (AS014) at 1:10000 dilution.

Lysates/proteins: 25µg per lane.

Blocking buffer: 3% nonfat dry milk in TBST.

Detection: ECL Basic Kit (RM00020).

Exposure time: 15s.