

A3440

Leader in Biomolecular Solutions for Life Science



MIEF1 Rabbit pAb

Catalog No.: A3440

Basic Information

Observed MW

51kDa

Calculated MW

51kDa

Category

Polyclonal Antibody

Applications

WB

Cross-Reactivity

Human,Mouse

Background

Enables ADP binding activity; GDP binding activity; and identical protein binding activity. Involved in several processes, including positive regulation of mitochondrial fission; positive regulation of mitochondrial translation; and positive regulation of protein targeting to membrane. Located in mitochondrial matrix and mitochondrial outer membrane. Colocalizes with mitochondrial large ribosomal subunit.

Recommended Dilutions

WB 1:500 - 1:1000

Immunogen Information

Gene ID

54471

Swiss Prot

Q9NQG6

Immunogen

Synthetic peptide. This information is considered to be commercially sensitive.

Synonyms

MID51; LOR8F8; SMCR7L; AltMIEF1; HSU79252; MIEF1-MP; dJ1104E15.3; MIEF1

Contact



www.abclonal.com

Product Information

Source

Rabbit

Isotype

IgG

Purification

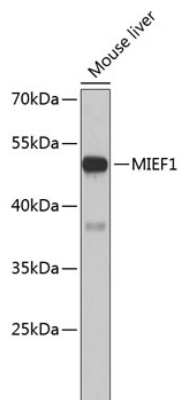
Affinity purification

Storage

Store at 4°C. Avoid freeze / thaw cycles.

Buffer: PBS with 0.02% sodium azide,pH7.3.

Validation Data



Western blot analysis of lysates from mouse liver, using MIEF1 Rabbit pAb (A3440).
Secondary antibody: HRP-conjugated Goat anti-Rabbit IgG (H+L) (AS014) at 1:10000 dilution.

Lysates/proteins: 25µg per lane.

Blocking buffer: 3% nonfat dry milk in TBST.